



GREEN MOUNTAIN ANGUS RANCH

MEATING THE GRADE
ANNUAL SPRING BULL SALE
FRIDAY, MARCH 8, 2024
NEW LOCATION PAYS, BILLINGS, MT

————— Lunch at 11 AM • Sale at 1 PM —————

SELLING: 120 BULLS

- First Season Guarantee • Volume Discounts •
- Free Delivery • Free Wintering •



Hello from all of us at
Green Mountain Angus Ranch!

Greetings from all of us at Green Mountain Angus Ranch! Hope this finds all of you in good health and having a prosperous year. We here at Green Mountain have reached a milestone as this is our 50th year in the Angus business. It seems like yesterday when we had our first bull sale at Sturgis Livestock Sale barn in 1973. There has been a lot of changes in the breed since then. One thing that hasn't changed is our commitment to provide the best service and the best genetics that are available. Our commitment to you our customer will always be our number 1 priority. Thank You for letting us be a part of your program!

This has been a very good year here in central Montana. Early rains gave us a good grass crop and we even got to cut some dry land hay-something we haven't been able to do for several years. It sure feels good to see the stack yards full! Another great thing this year is our cattle prices. Most of us sold our calves and yearlings for the highest prices we have ever received. The national cow herd is at an all-time low, beef consumption is high, exports are great, all of these facts tend to make me think we have several good years in front of us.

The sale bulls are again being fed at Brad Kraft's in Billings. Brad does a great job feeding the bulls the right way. They are fed to stay sound. The sale bulls have been picked and are in their pens. This year's crop looks to be the best set we have ever raised. Flagstone and Advocate did their usual great job. Both bulls are making a positive mark on the Angus breed. New bulls like Wrangler and Architect have fit right into this program. Wrangler is one of the top calving ease sires in the Angus breed. His calves come easy, have lots of vigor and grow up to be thick stout calves. Wrangler will be represented in the sale with over 10 sons selling. Architect is a new growth bull that we tried this year. Architect goes back to the great Chisum bull that we used several years ago. Our Chisum daughters are some of our best cows. We are hoping Architect does the same. Sitz Virtue is another new sire with a high PAP score. Virtue is doing a great job all over the country. Virtue sons show a lot of thickness and stand good on their feet and legs. The Virtue calves that we had on display during the tour were a lot of peoples favorite. As in the past the bulls will be wintered, semen tested and delivered at no charge this spring. No matter what you are looking for- growth, maternal, carcass traits or calving ease this sale will have what you need.

As always we would like to thank you for considering us and letting us be a part of your program. We will continue to use all the available tools that are out there to produce the type of cattle that meet and exceed your expectations. We invite you to visit our website at www.greenmountain-angus.com

Please consider this your personal invitation to our March 8th sale at the Public Auction Yard in Billings Montana and if you have any questions on the bulls or the heifers, please don't hesitate to call. Thank you for considering us. We would love to be a part of you program.

Sincerely,
Tim & Kris Todd

GREEN MOUNTAIN ANGUS RANCH

RYEGATE,
MONTANA

SALE DAY PHONE:

(406) 220-1975
(406) 220-2138

SALE HEADQUARTERS

PAYS
Billings, Montana

FOR RESERVATIONS

Contact Green Mountain Angus Ranch
(406) 568-2768 OR (406) 220-1975

SALE LOCATION

Public Auction Yards
1802 Minnesota Ave
Billings, MT 59101

LUNCH

A complimentary lunch will be served at PAYS.

GREEN MOUNTAIN ANGUS RANCH

35 Green Mountain Drive
Ryegate, MT 59074

Tim & Kris Todd
(406) 568-2768

Cell # (406) 220-1975

Sale will be broadcasted on



(866) 313-0123



406-220-1975 (c) | Ti

∞
A
R
Ki
Jo
D
D
Sc
D
Fr
ca
us
ac
II
C
A
H
Py
&
L
M
L
Lc
Lc
B
Bi
w

MEETING THE GRADE ANNUAL SPRING BULL SALE FRIDAY, MARCH 8, 2024 NEW LOCATION PAYS, BILLINGS, MT

- ◀ Volume Discounts
 - ◀ First Season Guarantee
 - ◀ Free Delivery
 - ◀ Free Wintering
- Lunch at 11 AM
Sale at 1 PM

AUCTIONEER: Roger Jacobs

REPRESENTATIVES:

Kurt Kangas.....American Angus Assn & Angus Journal
 John Goggins.....Western Ag Reporter
 Devin Murnin.....Western Livestock Journal
 Don Ravellette.....RPI Promotions
 Scott Dirk.....Tri-State Livestock News

DELIVERY

Free delivery on all bulls. We will try to deliver cattle to your ranch. In cases of inclement weather conditions, we would request that you meet us at a suitable place for both parties. Please leave your complete mailing address, phone number and directions to your ranch.

INSPECTION OF CATTLE

Cattle will be available for viewing on Thursday March 7th at the Public Auction Yards.

HEALTH

Pyramid 5 -Vision 8 Somnus & Nuplura at branding and weaning & Nasalgen & Multimin. Bulls will have 2 rounds of Fusogard before spring delivery.

LIVESTOCK MORTALITY INSURANCE

Mortality insurance will be available for your purchases at the sale

LOT NUMBERS

Lot numbers will correspond with the lot number in the catalog.
Low birth weight bulls will have white ear tags and cow bulls will have green tags.

BUYERS THAT ARE UNABLE TO ATTEND SALE

Buyers may send their bids to the field representatives or Auctioneer. Bids will be handled as if you were present.

GREEN MOUNTAIN ANGUS RANCH RETAINS ONE THIRD REVENUE SHARING INTERESTS IN EACH BULL SELLING. BUYER HAS 100% POSSESSION AND 100% SALVAGE VALUE.

FREE DELIVERY ON ALL BULLS & FREE WINTERING ON ALL BULLS

THE GUARANTEE

All bulls will be covered 50% by Green Mountain Angus Ranch if they are injured during their first breeding season and unable to return to service during that first breeding season. Breeding season is defined as the 90-day period following the first turnout of the bulls. If a replacement bull is available, he will be provided, or if a buyer prefers credit towards a bull in the following year's sale, 50% of the value of the injured bull, minus one-half salvage value will be given as credit. All injured bulls must be diagnosed by a veterinarian. Please notify us as soon as possible should injury occur and prior to the injured bull being sold for salvage. All claims must be made by September 1st, 2023.

TERMS & CONDITIONS

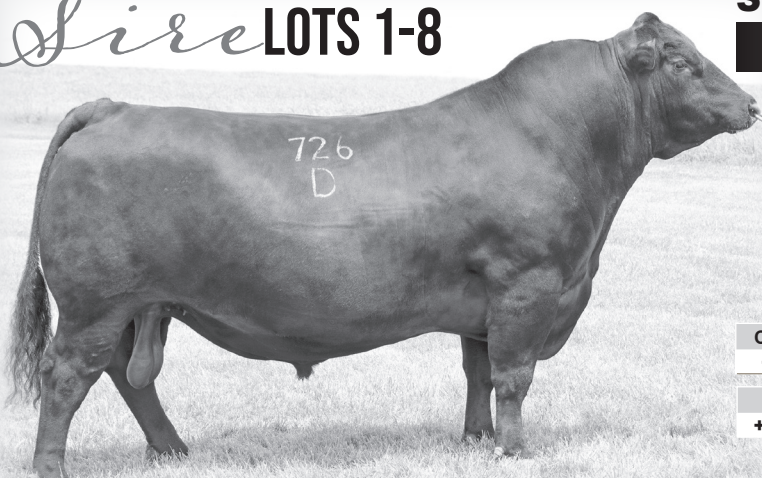
This sale is being conducted under the suggested terms and conditions adopted by the American Angus Association effective March 16, 1992. Except for those stated in the terms and conditions, there are no warranties, either expressed or implied, as to merchantability or fitness for particular purpose with respect to the cattle being sold in this auction. The warranties and guarantees set forth in the "Terms and Conditions are in Lieu of all warranties, either expressed or implied and remedies provided there in shall be the sole and exclusive remedy of the buyer (or any party claiming through buyer) for all other obligations or liabilities. A copy of the Association Terms and Conditions will be available sale day for inspection.



(c) | **Tim & Kris Todd** | www.GreenMountainAngus.com



Sire LOTS 1-8



Sitz Stellar 726D

Reg No: *18397542

BENFIELD SUBSTANCE 8506
MOHNEN SUBSTANTIAL 272
MOHNEN GLYN MAWR ELBA 1758

CONNEALY FINAL PRODUCT
SITZ PRIDE 200B
SITZ PRIDE 308Y

H A IMAGE MAKER 0415
BENFIELD EDELLA 1105
LT TERRITORY 5824 OF EA
MOHNEN GLYN MAWR ELBA 1345
CONNEALY PRODUCT 568
EBONISTA OF CONANGA 471
SITZ UPWARD 307R
SITZ PRIDE 44P

| CED | BW | WW | YW | SC | Doc | Claw | Angle | PAP |
|------|------|-----|-------|-------|-----|-------|-------|-------|
| +5 | -0.1 | +69 | +125 | +0.84 | +16 | +0.29 | +0.41 | -2.43 |
| HP | Milk | CW | Marb | REA | \$M | \$W | \$B | \$C |
| +6.5 | +17 | +47 | +0.64 | +0.43 | +49 | +63 | +137 | +227 |



LOT 1

MEATING THE GRADE ANNUAL BULL SALE

LOT 1 GMAR STELLAR INNOVATION L090

BD: 1/29/23 Reg No: 20644478

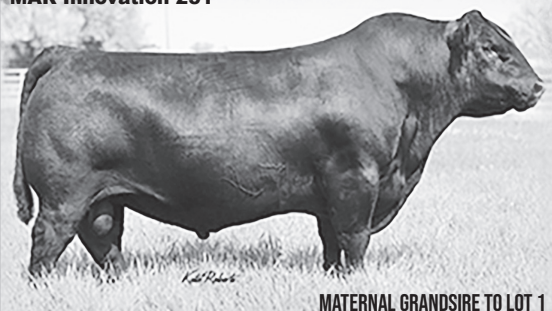
MOHNEN SUBSTANTIAL 272
SITZ STELLAR 726D
SITZ PRIDE 200B

MAR INNOVATION 251
THM LADY INNOVATION 3189-680
RB LADY COMPLETE 890-3189

BENFIELD SUBSTANCE 8506
MOHNEN GLYN MAWR ELBA 1758
CONNEALY FINAL PRODUCT
SITZ PRIDE 308Y
CONNEALY IMPRESSION
MAR FINAL KAHUNA 856
SUMMITCREST COMPLETE 1P55
R B LADY STANDARD 305-890

| Act. BW | CED | BW | WW | YW | SC | Doc | Claw | Angle | |
|---------|------|------|-----|-------|-------|-----|-------|-------|------|
| 79 | +5 | +0.6 | +79 | +140 | +1.16 | +28 | +0.34 | +0.38 | |
| PAP | HP | Milk | CW | Marb | REA | \$M | \$W | \$B | \$C |
| +1.83 | +3.9 | +27 | +62 | +0.84 | +0.79 | +58 | +76 | +174 | +284 |

MAR Innovation 251



MATERNAL GRANDSIRE TO LOT 1

Here's a very flashy stellar son, out of one of the most physically dominant donors in the GMAR program. L090 has an outstanding birthweight to yearling weight spread, to go along with excellent scrotal he also has a very controlled mature, weight and mature height to go along with top 10% of the breed foot score and a great set of dollar values.

LOT 2

GMAR STELLAR L050

BD: 1/26/23

Reg No: 20644412

MOHNEN SUBSTANTIAL 272
SITZ STELLAR 726D
SITZ PRIDE 200B

LD CAPITALIST 316
GMAR CAPITALIST J170
GMAR BLACK GRANITE E078

BENFIELD SUBSTANCE 8506
MOHNEN GLYN MAWR ELBA 1758
CONNEALY FINAL PRODUCT
SITZ PRIDE 308Y
CONNEALY CAPITALIST 028
LD DIXIE ERICA 2053
CONNEALY BLACK GRANITE
GMAR MOTIVE C072

| Act. BW | CED | BW | WW | YW | SC | Doc | Claw | Angle | |
|---------|-------|------|-----|-------|-------|-----|-------|-------|------|
| 74 | +11 | -0.9 | +69 | +119 | +1.28 | +2 | +0.35 | +0.44 | |
| PAP | HP | Milk | CW | Marb | REA | \$M | \$W | \$B | \$C |
| -4.20 | +13.4 | +26 | +39 | +0.66 | +0.66 | +86 | +75 | +126 | +249 |

LOT 3

GMAR STELLAR L672

BD: 2/2/23

Reg No: 20676203

MOHNEN SUBSTANTIAL 272
SITZ STELLAR 726D
SITZ PRIDE 200B

G A R ASHLAND
GMAR ASHLAND J749
GMAR RESERVE C152

BENFIELD SUBSTANCE 8506
MOHNEN GLYN MAWR ELBA 1758
CONNEALY FINAL PRODUCT
SITZ PRIDE 308Y
G A R EARLY BIRD
CHAIR ROCK AMBUSH 1018
V A R RESERVE 1111
GMAR NEW LEVEL 5072

| Act. BW | CED | BW | WW | YW | SC | Doc | Claw | Angle | |
|---------|------|------|-----|-------|-------|-----|-------|-------|------|
| 68 | +15 | -3.9 | +48 | +87 | +0.01 | +12 | +0.27 | +0.38 | |
| PAP | HP | Milk | CW | Marb | REA | \$M | \$W | \$B | \$C |
| -3.39 | +8.3 | +21 | +32 | +1.11 | +0.56 | +69 | +52 | +150 | +264 |



From Vancle

LOT 4

GMAR STELLAR L670

BD: 2/1/23

Reg No: 20676208

MOHNEN SUBSTANTIAL 272
SITZ STELLAR 726D
SITZ PRIDE 200B

G A R ASHLAND
GMAR ASHLAND J742
GMAR RESERVE B369

BENFIELD SUBSTANCE 8506
MOHNEN GLYN MAWR ELBA 1758
CONNEALY FINAL PRODUCT
SITZ PRIDE 308Y
G A R EARLY BIRD
CHAIR ROCK AMBUSH 1018
V A R RESERVE 1111
GMAR IMAGE MAKER U611

| Act. BW | CED | BW | WW | YW | SC | Doc | Claw | Angle | |
|---------|-------|------|-----|-------|-------|-----|-------|-------|------|
| 80 | +7 | +0.6 | +71 | +125 | +1.17 | +17 | +0.35 | +0.52 | |
| PAP | HP | Milk | CW | Marb | REA | \$M | \$W | \$B | \$C |
| -2.11 | +12.3 | +26 | +37 | +0.65 | +0.36 | +70 | +70 | +111 | +214 |

This special sale feature by Stellar, brings all the traits to the table that have made his sire famous. L670 has a great birth to grow spread with excellent scrotal, controlled mature weight and mature height to go along with very good foot scores and a very negative PAP.

LOT 5

GMAR STELLAR L659

BD: 1/29/23

Reg No: 20667956

MOHNEN SUBSTANTIAL 272
SITZ STELLAR 726D
SITZ PRIDE 200B

LD CAPITALIST 316
GMAR CAPITALIST J760
GMAR IN FOCUS Y123

BENFIELD SUBSTANCE 8506
MOHNEN GLYN MAWR ELBA 1758
CONNEALY FINAL PRODUCT
SITZ PRIDE 308Y
CONNEALY CAPITALIST 028
LD DIXIE ERICA 2053
MYTTY IN FOCUS
GMAR PROGRAM U644

| Act. BW | CED | BW | WW | YW | SC | Doc | Claw | Angle | |
|---------|------|------|-----|-------|-------|-----|-------|-------|------|
| 60 | +7 | +0.7 | +67 | +112 | +0.08 | +9 | +0.30 | +0.39 | |
| PAP | HP | Milk | CW | Marb | REA | \$M | \$W | \$B | \$C |
| -1.88 | +9.3 | +11 | +43 | +0.72 | +0.32 | +58 | +54 | +134 | +232 |

MEATING THE GRADE ANNUAL BULL SALE

YOUR VOLUME SOURCE FOR PROVEN & RELIABLE CALVING EASE GENETICS!



Pam Vanek

LOT 6

GMAR STELLAR L081

BD: 1/28/23

Reg No: 20644434

MOHNEN SUBSTANTIAL 272
SITZ STELLAR 726D
SITZ PRIDE 200B

BENFIELD SUBSTANCE 8506
MOHNEN GLYN MAWR ELBA 1758
CONNEALY FINAL PRODUCT
SITZ PRIDE 308Y
HOOVER NO DOUBT
BALDRIDGE ISABEL Y69
BASIN PAYWEIGHT 1682
BASIN LADY S532 AK

BALDRIDGE FLAGSTONE F411
GMAR FLAGSTONE J190
GMAR PAYWEIGHT E025

| Act. BW | CED | BW | WW | YW | SC | Doc | Claw | Angle |
|---------|-----|------|-----|------|-------|-----|-------|-------|
| 77 | +3 | +2.3 | +86 | +156 | +1.24 | +29 | +0.41 | +0.48 |

| PAP | HP | Milk | CW | Marb | REA | \$M | \$W | \$B | \$C |
|-------|-------|------|-----|-------|-------|-----|-----|------|------|
| -0.56 | +12.7 | +28 | +61 | +0.52 | +0.65 | +70 | +77 | +140 | +252 |

Here is a calf that represents the program. He is a Stellar son back to Flagstone, a bull that has done incredible feats in the GMAR herd. L081 Shows tremendous growth with an outstanding scrotal score -shows a very good heifer pregnancy and foot scores to boot. L081 has a very good pap and a very balanced set of carcass figures.



Pam Vanek

LOT 7

GMAR STELLAR L178

BD: 2/4/23

Reg No: 20644436

MOHNEN SUBSTANTIAL 272
SITZ STELLAR 726D
SITZ PRIDE 200B

BENFIELD SUBSTANCE 8506
MOHNEN GLYN MAWR ELBA 1758
CONNEALY FINAL PRODUCT
SITZ PRIDE 308Y
HOOVER NO DOUBT
BALDRIDGE ISABEL Y69
EXAR SIGNIFICANT 1769B
GMAR ALLIANCE U093

BALDRIDGE FLAGSTONE F411
GMAR FLAGSTONE J105
GMAR SIGNIFICANT A189

| Act. BW | CED | BW | WW | YW | SC | Doc | Claw | Angle |
|---------|-----|------|-----|------|-------|-----|-------|-------|
| 83 | +0 | +1.5 | +68 | +120 | +1.79 | +26 | +0.28 | +0.36 |

| PAP | HP | Milk | CW | Marb | REA | \$M | \$W | \$B | \$C |
|-------|-------|------|-----|-------|-------|-----|-----|------|------|
| -0.67 | +11.4 | +21 | +43 | +0.83 | +0.65 | +75 | +62 | +142 | +259 |

LOT 8

GMAR STELLAR L658

BD: 1/29/23

Reg No: 20667955

MOHNEN SUBSTANTIAL 272
SITZ STELLAR 726D
SITZ PRIDE 200B

BENFIELD SUBSTANCE 8506
MOHNEN GLYN MAWR ELBA 1758
CONNEALY FINAL PRODUCT
SITZ PRIDE 308Y
G A R EARLY BIRD
CHAIR ROCK AMBUSH 1018
S A V RAINDANCE 6848
GMAR IDENTITY C643

G A R ASHLAND
GMAR ASHLAND J681
GMAR RAINDANCE G858

| Act. BW | CED | BW | WW | YW | SC | Doc | Claw | Angle |
|---------|-----|------|-----|------|-------|-----|-------|-------|
| 80 | +6 | +2.4 | +92 | +163 | +0.54 | +18 | +0.45 | +0.43 |

| PAP | HP | Milk | CW | Marb | REA | \$M | \$W | \$B | \$C |
|-------|------|------|-----|-------|-------|-----|-----|------|------|
| +0.42 | +7.9 | +19 | +80 | +0.47 | +0.72 | +53 | +73 | +173 | +277 |

If you wanna bull with added size and dimension but don't wanna give up look and eye appeal. Then Lot 8 is your bull. L658 has a great set of foot scores and one of the highest carcass weights in the offering to go along with a great set of dollar values.

MEATING THE GRADE ANNUAL BULL SALE

Sire **LOTS 9-26**



M R A Advocate 9035

Reg No: *19572776

CONNEALY JUDGMENT
KG JUSTIFIED 3023
 KG MISS MAGIC 1443

 CONNEALY ARSENAL 2174
M R A BLACKBIRD 6362
 MRA BLACKBIRD 0072

CONNEALY CONSENSUS 7229
 ENTRINE OF CONANGA 9876
 SITZ WISDOM 481T
 KG MISS MAGIC 3528
 CONNEALY PACKER 547
 BLACK RICE OF CONANGA 9529
 S A V FINAL ANSWER 0035
 M R MISS RUSS 4260

| CED | BW | WW | YW | SC | Doc | Claw | Angle | PAP |
|-------|------|-----|-------|-------|-----|-------|-------|-------|
| +12 | -0.7 | +60 | +109 | +1.83 | +21 | +0.36 | +0.45 | +0.97 |
| HP | Milk | CW | Marb | REA | \$M | \$W | \$B | \$C |
| +19.4 | +35 | +32 | +0.90 | +0.16 | +95 | +69 | +120 | +251 |

LOT 9

GMAR ADVOCATE L539

BD: 2/1/23

Reg No: 20735844

KG JUSTIFIED 3023
M R A ADVOCATE 9035
 M R A BLACKBIRD 6362

BOYD COACH 7127
GMAR PLAYBOOK J902
 GMAR BONUS F132

CONNEALY JUDGMENT
 KG MISS MAGIC 1443
 CONNEALY ARSENAL 2174
 MRA BLACKBIRD 0072
 TEX PLAYBOOK 5437
 BOYD ROSETTA 4300
 BASIN BONUS 4345
 GMAR BLACK GRANITE D245

| Act. BW | CED | BW | WW | YW | SC | Doc | Claw | Angle | |
|---------|-------|------|-----|-------|-------|-----|-------|-------|------|
| 71 | +13 | -0.5 | +71 | +122 | +1.26 | +28 | +0.50 | +0.50 | |
| PAP | HP | Milk | CW | Marb | REA | \$M | \$W | \$B | \$C |
| +0.71 | +15.2 | +38 | +51 | +0.98 | +0.33 | +80 | +81 | +146 | +269 |

Here's an Advocate son, one of the bulls that's extremely popular in the breed right now for very good reasons- low birthweights with exceptional phenotype and maternal characteristics. L539 has a double digit CED and a negative birthweight to go along with great scrotal and heifer pregnancy scores. L539 brings a great set of carcass values and marbling with an outstanding set of dollar values.



Pam Vanek

LOT 9



Pam Vanek

LOT 10

GMAR ADVOCATE L268

BD: 2/16/23

Reg No: 20667934

KG JUSTIFIED 3023
M R A ADVOCATE 9035
 M R A BLACKBIRD 6362

BS MAGA D94
GMAR MAGA J210
 GMAR GAME DAY A101

CONNEALY JUDGMENT
 KG MISS MAGIC 1443
 CONNEALY ARSENAL 2174
 MRA BLACKBIRD 0072
 SYDGEN FATE 2800
 BS GAMMER 453
 GDAR GAME DAY 449
 JVC ALTUNE OF CONANGA 803

| Act. BW | CED | BW | WW | YW | SC | Doc | Claw | Angle | |
|---------|-------|------|-----|-------|-------|-----|-------|-------|------|
| 77 | +10 | +1.6 | +75 | +136 | +1.57 | +23 | +0.41 | +0.53 | |
| PAP | HP | Milk | CW | Marb | REA | \$M | \$W | \$B | \$C |
| +1.18 | +14.6 | +33 | +52 | +0.56 | +0.58 | +88 | +78 | +126 | +251 |

LOT 10:
 Another outstanding Advocate son who has a set of extremely balanced EPD's to go along with stunning phenotype. L268 has a double digit CED out to a great growth figure, very good scrotal and outstanding heifer pregnancy numbers. L539 Shows very good mature weight and mature height and one of the top dollar \$M's in the offering .



Pam Vanek

LOT 11

GMAR ADVOCATE L272

BD: 2/16/23

Reg No: 20667936

KG JUSTIFIED 3023
M R A ADVOCATE 9035
M R A BLACKBIRD 6362

CONNEALY INDUSTRY 5634
GMAR INDUSTRY Z002
JVC ALTUNE OF CONANGA 803

CONNEALY JUDGMENT
KG MISS MAGIC 1443
CONNEALY ARSENAL 2174
MRA BLACKBIRD 0072
CONNEALY FREIGHTLINER
EILERA OF CONANGA 2583
CONNEALY LEAD ON
ALTUNE OF CONANGA 6104

| Act. BW | CED | BW | WW | YW | SC | Doc | Claw | Angle | |
|---------|-------|------|-----|-------|-------|-----|-------|-------|------|
| 59 | +9 | +0.0 | +60 | +105 | +0.87 | +19 | +0.33 | +0.43 | |
| PAP | HP | Milk | CW | Marb | REA | \$M | \$W | \$B | \$C |
| +3.11 | +17.3 | +34 | +39 | +0.66 | +0.47 | +86 | +69 | +125 | +248 |

Another outstanding advocate son who is a true heifer bull with exceptional look and great mobility. L272 has a top 15% heifer pregnancy score with outstanding mature weight and mature height, top of the breed foot scores. L272 has a top 10% dollar M and outstanding overall dollar values.

LOT 12

GMAR ADVOCATE L296

BD: 2/19/23

Reg No: 20667905

KG JUSTIFIED 3023
M R A ADVOCATE 9035
M R A BLACKBIRD 6362

G A R ASHLAND
GMAR ASHLAND J772
GMAR RESOURCE D127

CONNEALY JUDGMENT
KG MISS MAGIC 1443
CONNEALY ARSENAL 2174
MRA BLACKBIRD 0072
G A R EARLY BIRD
CHAIR ROCK AMBUSH 1018
S A V RESOURCE 1441
GMAR ALLIANCE W167

| Act. BW | CED | BW | WW | YW | SC | Doc | Claw | Angle | |
|---------|-------|------|-----|-------|-------|-----|-------|-------|------|
| 76 | +14 | -0.5 | +74 | +140 | +1.16 | +21 | +0.41 | +0.47 | |
| PAP | HP | Milk | CW | Marb | REA | \$M | \$W | \$B | \$C |
| -1.45 | +16.1 | +29 | +51 | +0.58 | +0.54 | +71 | +72 | +139 | +251 |

LOT 13

GMAR ADVOCATE L071

BD: 1/28/23

Reg No: 20631630

KG JUSTIFIED 3023
M R A ADVOCATE 9035
M R A BLACKBIRD 6362

CIRCLE L PAYWEIGHT 118E
GMAR PAYWIEGHT J943
GMAR PAY RAISE D508

CONNEALY JUDGMENT
KG MISS MAGIC 1443
CONNEALY ARSENAL 2174
MRA BLACKBIRD 0072
BASIN PAYWEIGHT 1682
CIRCLE L LADY 920W
ICC PAY RAISE 4899
GMAR FINAL PRODUCT A046

| Act. BW | CED | BW | WW | YW | SC | Doc | Claw | Angle | |
|---------|-------|------|-----|-------|-------|-----|-------|-------|------|
| 71 | +11 | -0.6 | +68 | +118 | +1 | +19 | +0.44 | +0.49 | |
| PAP | HP | Milk | CW | Marb | REA | \$M | \$W | \$B | \$C |
| +1.53 | +15.7 | +36 | +41 | +0.44 | +0.21 | +81 | +78 | +105 | +217 |

LOT 14

GMAR ADVOCATE L079

BD: 1/28/23

Reg No: 20631636

KG JUSTIFIED 3023
M R A ADVOCATE 9035
M R A BLACKBIRD 6362

CIRCLE L GUS
GMAR GUS J263
GMAR TOMBSTONE G934

CONNEALY JUDGMENT
KG MISS MAGIC 1443
CONNEALY ARSENAL 2174
MRA BLACKBIRD 0072
S CHISUM 6175
CIRCLE L PRIDE X097
CHERRY KNOLL TOMBSTONE 1417
GMAR IMAGE MAKER W067

| Act. BW | CED | BW | WW | YW | SC | Doc | Claw | Angle | |
|---------|-------|------|-----|-------|-------|-----|-------|-------|------|
| 69 | +8 | +0.3 | +59 | +104 | +0.7 | +5 | +0.48 | +0.55 | |
| PAP | HP | Milk | CW | Marb | REA | \$M | \$W | \$B | \$C |
| +2.59 | +14.5 | +36 | +42 | +0.58 | +0.32 | +84 | +73 | +119 | +238 |

LOT 15

GMAR ADVOCATE L540

BD: 2/1/23

Reg No: 20735845

KG JUSTIFIED 3023
M R A ADVOCATE 9035
M R A BLACKBIRD 6362

MAR TIGER 7504
GMAR TIGER J915
GMAR BONUS F283

CONNEALY JUDGMENT
KG MISS MAGIC 1443
CONNEALY ARSENAL 2174
MRA BLACKBIRD 0072
GS TIGER 333
MIZPAH BLACKBIRD 9169
BASIN BONUS 4345
GMAR IMPRESSION D529

| Act. BW | CED | BW | WW | YW | SC | Doc | Claw | Angle | |
|---------|-------|------|-----|-------|-------|-----|-------|-------|------|
| 77 | +10 | +0.6 | +57 | +101 | +0.77 | +18 | +0.44 | +0.45 | |
| PAP | HP | Milk | CW | Marb | REA | \$M | \$W | \$B | \$C |
| -0.49 | +13.8 | +30 | +19 | +1.03 | +0.36 | +54 | +57 | +120 | +210 |

LOT 16

GMAR ADVOCATE L337

BD: 2/28/23

Reg No: 20667939

KG JUSTIFIED 3023
M R A ADVOCATE 9035
M R A BLACKBIRD 6362

MUSGRAVE FOUNDATION
GMAR FOUNDATION B476
GMAR BIG EYE W370

CONNEALY JUDGMENT
KG MISS MAGIC 1443
CONNEALY ARSENAL 2174
MRA BLACKBIRD 0072
KESSLERS FRONTMAN R001
MCATL BLACKCAP JUARA 29-434
ALC BIG EYE D09N
GMAR RITO 5089

| Act. BW | CED | BW | WW | YW | SC | Doc | Claw | Angle | |
|---------|-------|------|-----|-------|-------|-----|-------|-------|------|
| 81 | +12 | +0.7 | +79 | +135 | +0.7 | +6 | +0.61 | +0.64 | |
| PAP | HP | Milk | CW | Marb | REA | \$M | \$W | \$B | \$C |
| +0.24 | +16.3 | +37 | +51 | +0.49 | +0.56 | +61 | +83 | +118 | +214 |

LOT 17

GMAR ADVOCATE L298

BD: 2/20/23

Reg No: 20667907

KG JUSTIFIED 3023
M R A ADVOCATE 9035
M R A BLACKBIRD 6362

G A R ASHLAND
GMAR ASHLAND J759
GMAR RESOURCE B410

CONNEALY JUDGMENT
KG MISS MAGIC 1443
CONNEALY ARSENAL 2174
MRA BLACKBIRD 0072
G A R EARLY BIRD
CHAIR ROCK AMBUSH 1018
S A V RESOURCE 1441
GMAR ALLIANCE W156

| Act. BW | CED | BW | WW | YW | SC | Doc | Claw | Angle | |
|---------|-------|------|-----|-------|-------|-----|-------|-------|------|
| 68 | +13 | -0.8 | +70 | +126 | +1.16 | +25 | +0.46 | +0.46 | |
| PAP | HP | Milk | CW | Marb | REA | \$M | \$W | \$B | \$C |
| +0.55 | +18.8 | +19 | +44 | +1.21 | +0.23 | +90 | +66 | +159 | +296 |

MEATING THE GRADE ANNUAL BULL SALE

LOT 18

GMAR ADVOCATE L236

BD: 2/11/23

Reg No: 20667864

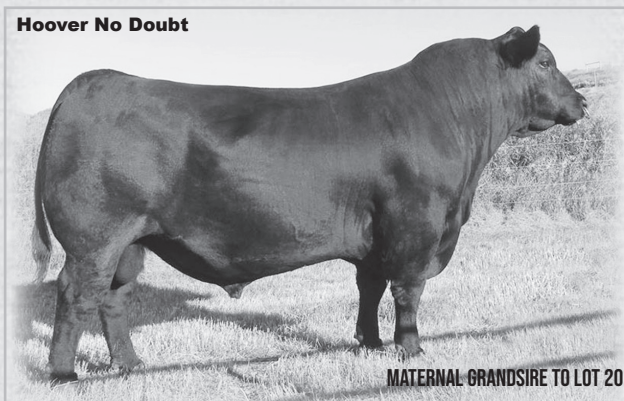
KG JUSTIFIED 3023
M R A ADVOCATE 9035
M R A BLACKBIRD 6362

M R A ADVOCATE 9035
GMAR ADVOCATE J652
GMAR SOUTHERN CHARM G087

CONNEALY JUDGMENT
KG MISS MAGIC 1443
CONNEALY ARSENAL 2174
MRA BLACKBIRD 0072
KG JUSTIFIED 3023
M R A BLACKBIRD 6362
BUBS SOUTHERN CHARM AA31
SD BLANCHE 402

| Act. BW | CED | BW | WW | YW | SC | Doc | Claw | Angle | |
|---------|-------|------|-----|-------|-------|-----|-------|-------|------|
| 73 | +12 | -1.1 | +62 | +114 | +1.56 | +26 | +0.42 | +0.46 | |
| PAP | HP | Milk | CW | Marb | REA | \$M | \$W | \$B | \$C |
| +0.56 | +21.0 | +38 | +30 | +0.71 | +0.34 | +99 | +75 | +109 | +240 |

Hoover No Doubt



MATERNAL GRANDSIRE TO LOT 20

LOT 19

GMAR ADVOCATE L003

BD: 1/18/23

Reg No: 20631604

KG JUSTIFIED 3023
M R A ADVOCATE 9035
M R A BLACKBIRD 6362

LINZ EXEMPLIFY 71124
GMAR EXEMPLIFY J261
GMAR CHISUM A582

CONNEALY JUDGMENT
KG MISS MAGIC 1443
CONNEALY ARSENAL 2174
MRA BLACKBIRD 0072
CONNEALY CONFIDENCE PLUS
M A R ERICA 1617
S CHISUM 6175
GMAR IMAGE MAKER U022

| Act. BW | CED | BW | WW | YW | SC | Doc | Claw | Angle | |
|---------|-------|------|-----|-------|-------|-----|-------|-------|------|
| 71 | +2 | +1.7 | +73 | +127 | +2.2 | +16 | +0.58 | +0.65 | |
| PAP | HP | Milk | CW | Marb | REA | \$M | \$W | \$B | \$C |
| -0.77 | +13.3 | +38 | +62 | +0.72 | +0.39 | +64 | +79 | +146 | +253 |

LOT 20

GMAR ADVOCATE L151

BD: 2/2/23

Reg No: 20631664

KG JUSTIFIED 3023
M R A ADVOCATE 9035
M R A BLACKBIRD 6362

HOOVER NO DOUBT
GMAR NO DOUBT 019H
RB LADY CONFIDENCE 890-424

CONNEALY JUDGMENT
KG MISS MAGIC 1443
CONNEALY ARSENAL 2174
MRA BLACKBIRD 0072
MOGCK BULLSEYE
MISS BLACKCAP ELLSTON J2
CONNEALY CONFIDENCE 0100
R B LADY STANDARD 305-890

| Act. BW | CED | BW | WW | YW | SC | Doc | Claw | Angle | |
|---------|-------|------|-----|-------|-------|-----|-------|-------|------|
| 86 | +3 | +2.7 | +62 | +119 | +1.56 | +21 | +0.45 | +0.51 | |
| PAP | HP | Milk | CW | Marb | REA | \$M | \$W | \$B | \$C |
| +1.28 | +15.0 | +33 | +51 | +0.92 | +0.51 | +68 | +60 | +160 | +276 |

LOT 21

GMAR ADVOCATE L293

BD: 2/19/23

Reg No: 20667903

KG JUSTIFIED 3023
M R A ADVOCATE 9035
M R A BLACKBIRD 6362

JAR RESOURCE D800
GMAR RESOURCE J275
GMAR FINAL ANSWER Z363

CONNEALY JUDGMENT
KG MISS MAGIC 1443
CONNEALY ARSENAL 2174
MRA BLACKBIRD 0072
S A V RESOURCE 1441
COLEMAN DIXIE ERICA 8273
S A V FINAL ANSWER 0035
GMAR REAL WINDY 3156

| Act. BW | CED | BW | WW | YW | SC | Doc | Claw | Angle | |
|---------|-------|------|-----|-------|-------|-----|-------|-------|------|
| 83 | +3 | +1.9 | +71 | +123 | +1.02 | +18 | +0.37 | +0.42 | |
| PAP | HP | Milk | CW | Marb | REA | \$M | \$W | \$B | \$C |
| +0.97 | +10.6 | +18 | +43 | +0.25 | +0.41 | +64 | +60 | +110 | +207 |

LOT 22

GMAR ADVOCATE L505

BD: 2/10/23

Reg No: 20735828

KG JUSTIFIED 3023
M R A ADVOCATE 9035
M R A BLACKBIRD 6362

BALDRIDGE FLAGSTONE F411
GMAR FLAGSTONE J316
GMAR DEMPSEY B045

CONNEALY JUDGMENT
KG MISS MAGIC 1443
CONNEALY ARSENAL 2174
MRA BLACKBIRD 0072
HOOVER NO DOUBT
BALDRIDGE ISABEL Y69
FF DEMPSEY Y11
JVC ALTUNE OF CONANGA 803

| Act. BW | CED | BW | WW | YW | SC | Doc | Claw | Angle | |
|---------|-------|------|-----|-------|-------|-----|-------|-------|------|
| 86 | +7 | +0.6 | +62 | +114 | +0.94 | +23 | +0.40 | +0.43 | |
| PAP | HP | Milk | CW | Marb | REA | \$M | \$W | \$B | \$C |
| +2.90 | +14.0 | +31 | +40 | +0.94 | +0.02 | +70 | +64 | +130 | +239 |

LOT 23

GMAR ADVOCATE L502

BD: 1/28/23

Reg No: 20735826

KG JUSTIFIED 3023
M R A ADVOCATE 9035
M R A BLACKBIRD 6362

M R A BLACK GRANITE 7132
GMAR BLACK GRANITE J276
GMAR INDUSTRY Y068

CONNEALY JUDGMENT
KG MISS MAGIC 1443
CONNEALY ARSENAL 2174
MRA BLACKBIRD 0072
CONNEALY BLACK GRANITE
MRA BARBRA 4143
CONNEALY INDUSTRY 5634
GMAR RITO 5509

| Act. BW | CED | BW | WW | YW | SC | Doc | Claw | Angle | |
|---------|-------|------|-----|-------|-------|-----|-------|-------|------|
| 88 | +5 | +2.5 | +60 | +95 | +1.55 | +17 | +0.38 | +0.51 | |
| PAP | HP | Milk | CW | Marb | REA | \$M | \$W | \$B | \$C |
| +0.18 | +18.0 | +29 | +34 | +0.72 | +0.54 | +98 | +66 | +125 | +260 |

LOT 24

GMAR ADVOCATE L507

BD: 2/5/23

Reg No: 20735829

KG JUSTIFIED 3023
M R A ADVOCATE 9035
M R A BLACKBIRD 6362

BALDRIDGE FLAGSTONE F411
GMAR FLAGSTONE J322
GMAR ALLIANCE U093

CONNEALY JUDGMENT
KG MISS MAGIC 1443
CONNEALY ARSENAL 2174
MRA BLACKBIRD 0072
HOOVER NO DOUBT
BALDRIDGE ISABEL Y69
KMK ALLIANCE 6595 187
GMAR MS GATEWAY 7012

| Act. BW | CED | BW | WW | YW | SC | Doc | Claw | Angle | |
|---------|-------|------|-----|-------|-------|-----|-------|-------|------|
| 77 | +4 | +1.2 | +64 | +107 | +2.33 | +26 | +0.33 | +0.26 | |
| PAP | HP | Milk | CW | Marb | REA | \$M | \$W | \$B | \$C |
| -0.08 | +16.2 | +30 | +29 | +1.32 | +0.17 | +81 | +67 | +133 | +254 |



MEATING THE GRADE ANNUAL BULL SALE



LOT 25

GMAR ADVOCATE L667

BD: 2/1/23

Reg No: 20667961

KG JUSTIFIED 3023
M R A ADVOCATE 9035
M R A BLACKBIRD 6362

BALDRIDGE FLAGSTONE F411
GMAR FLAGSTONE J878
GMAR CHISUM D548

CONNEALY JUDGMENT
KG MISS MAGIC 1443
CONNEALY ARSENAL 2174
MRA BLACKBIRD 0072
HOOVER NO DOUBT
BALDRIDGE ISABEL Y69
DEEP CREEK TUNSTALL 422
GMAR DEMPSEY A226

| Act. BW | CED | BW | WW | YW | SC | Doc | Claw | Angle | |
|---------|-------|------|-----|-------|-------|-----|-------|-------|------|
| 68 | +8 | +1.0 | +63 | +114 | +2.8 | +30 | +0.27 | +0.42 | |
| PAP | HP | Milk | CW | Marb | REA | \$M | \$W | \$B | \$C |
| +0.07 | +13.0 | +33 | +43 | +0.66 | +0.74 | +88 | +69 | +136 | +264 |

LOT 26

GMAR ADVOCATE L747

BD: 2/27/23

Reg No: 20668002

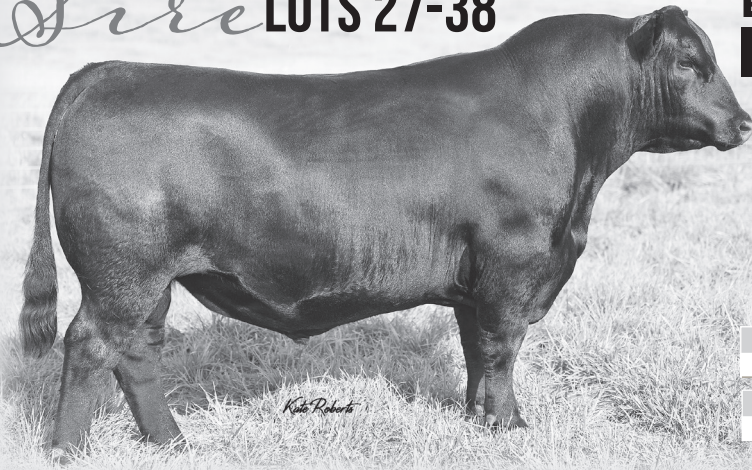
KG JUSTIFIED 3023
M R A ADVOCATE 9035
M R A BLACKBIRD 6362

DEEP CREEK TUNSTALL 422
GMAR CHISUM F940
GMAR BEAR PAW C631

CONNEALY JUDGMENT
KG MISS MAGIC 1443
CONNEALY ARSENAL 2174
MRA BLACKBIRD 0072
S CHISUM 6175
DEEP CREEK 193 LASS 516
VERMILION BEAR PAW A405
GMAR UPWARD Y393

| Act. BW | CED | BW | WW | YW | SC | Doc | Claw | Angle | |
|---------|-------|------|-----|-------|-------|-----|-------|-------|------|
| 75 | +5 | +1.0 | +67 | +128 | +1.07 | +20 | +0.48 | +0.48 | |
| PAP | HP | Milk | CW | Marb | REA | \$M | \$W | \$B | \$C |
| +2.08 | +17.5 | +30 | +46 | +0.85 | +0.41 | +69 | +65 | +146 | +258 |

Sire LOTS 27-38



Baldrige Flagstone F411

Reg No: +*19478642

MOGCK BULLSEYE
HOOVER NO DOUBT
MISS BLACKCAP ELLSTON J2

STYLES UPGRADE J59
BALDRIDGE ISABEL Y69
BALDRIDGE ISABEL T935

MOGCK SURE SHOT
MOGCK MARY 1255
SYDGEN C & 7
MISS BLACKCAP ELLSTON D154
SITZ UPWARD 307R
PLAINVIEW LASSIE 71B
BALDRIDGE KABOOM K243 KCF
BALDRIDGE ISABEL P4527

| CED | BW | WW | YW | SC | Doc | Claw | Angle | PAP |
|------|------|-----|-------|-------|-----|-------|-------|-------|
| -2 | +3.4 | +67 | +124 | +1.28 | +34 | +0.27 | +0.20 | +4.06 |
| HP | Milk | CW | Marb | REA | \$M | \$W | \$B | \$C |
| +8.8 | +28 | +60 | +0.89 | +0.60 | +79 | +58 | +173 | +303 |

LOT 27

GMAR FLAGSTONE L266

BD: 2/15/23

Reg No: 20667932

HOOVER NO DOUBT
BALDRIDGE FLAGSTONE F411
BALDRIDGE ISABEL Y69

BUBS SOUTHERN JOE 674D
GMAR SOUTHERN JOE H083
GMAR ACTIVE DUTY F168

MOGCK BULLSEYE
MISS BLACKCAP ELLSTON J2
STYLES UPGRADE J59
BALDRIDGE ISABEL T935
BUBS SOUTHERN CHARM AA31
BUBS JOSEY 39A
R B ACTIVE DUTY 010
GMAR IMAGE MAKER X306

| Act. BW | CED | BW | WW | YW | SC | Doc | Claw | Angle | |
|---------|------|------|-----|-------|-------|-----|-------|-------|------|
| 80 | -3 | +2.7 | +68 | +120 | +0.65 | +26 | +0.42 | +0.38 | |
| PAP | HP | Milk | CW | Marb | REA | \$M | \$W | \$B | \$C |
| +2.39 | +6.2 | +31 | +45 | +1.01 | +0.85 | +61 | +67 | +155 | +262 |

This special sale highlight is truly a program animal being out of Flagstone and tracing back to the legendary muscle bull Active Duty. Lot 27 is chuck full of red meat and big-time muscle expression. L266 has outstanding foot scores is above one on marbling and has an overall carcass and dollar values to improve any heard.



Baldrige Isabel Y69



PATERNAL GRANDAM LOTS 27-38

Hoover No Doubt



PATERNAL GRANDSIRE TO LOTS 27-38

MEATING THE GRADE ANNUAL BULL SALE

8

YOUR VOLUME SOURCE FOR PROVEN & RELIABLE CALVING EASE GENETICS!



Pam Vanek



LOT 28 **GMAR FLAGSTONE L335**
 BD: 2/28/23 Reg No: 20667884

HOOVER NO DOUBT
BALDRIDGE FLAGSTONE F411
 BALDRIDGE ISABEL Y69

CONNELLY GUINNESS
GMAR GUINNESS E264
 GMAR FINAL PRODUCT C765

MOGCK BULLSEYE
 MISS BLACKCAP ELLSTON J2
 STYLES UPGRADE J59
 BALDRIDGE ISABEL T935
 CONNEALY DUBLIN 8223
 PANDA OF CONANGA 3609
 RB FINAL PRODUCT 1196-366
 GMAR IMAGE MAKER W020

| Act. BW | CED | BW | WW | YW | SC | Doc | Claw | Angle |
|---------|-----|------|-----|------|----|-----|-------|-------|
| 92 | -5 | +5.8 | +66 | +114 | +1 | +22 | +0.17 | +0.26 |

| PAP | HP | Milk | CW | Marb | REA | \$M | \$W | \$B | \$C |
|-------|-------|------|-----|-------|-------|-----|-----|------|------|
| +3.98 | +14.1 | +34 | +51 | +0.96 | +0.55 | +80 | +56 | +163 | +291 |

Here's a big-time cow bull by Flagstone, he has all the power and muscle expression that we have come to know in the Flagstone cattle. L335 is the only bull in the offering with the perfect foot scores of top 1% of the breed & that is a feat that is very hard to achieve. L335 has a big time dollar M and one of the top dollar C in the offering.

LOT 29 **GMAR FLAGSTONE L075**
 BD: 1/28/23 Reg No: 20631633

HOOVER NO DOUBT
BALDRIDGE FLAGSTONE F411
 BALDRIDGE ISABEL Y69

KOUPALS B & B FIX IT 6072
GMAR FIX IT F022
 GMAR GAME DAY Y003

MOGCK BULLSEYE
 MISS BLACKCAP ELLSTON J2
 STYLES UPGRADE J59
 BALDRIDGE ISABEL T935
 KOUPALS B&B FORT KNOX 2077
 B&B PHYLLIS 2041
 GDAR GAME DAY 449
 C C A PRIMROSE 672

| Act. BW | CED | BW | WW | YW | SC | Doc | Claw | Angle |
|---------|-----|------|-----|------|------|-----|-------|-------|
| 81 | +3 | +2.9 | +63 | +105 | +0.9 | +19 | +0.38 | +0.23 |

| PAP | HP | Milk | CW | Marb | REA | \$M | \$W | \$B | \$C |
|-------|------|------|-----|-------|-------|-----|-----|------|------|
| +3.48 | +8.2 | +26 | +39 | +0.59 | +0.21 | +77 | +61 | +117 | +229 |

LOT 31 **GMAR FLAGSTONE L013**
 BD: 1/17/23 Reg No: 20631608

HOOVER NO DOUBT
BALDRIDGE FLAGSTONE F411
 BALDRIDGE ISABEL Y69

KESSLERS FRONTMAN R001
GMAR FRONTMAN A079
 GMAR FINAL ANSWER Y260

MOGCK BULLSEYE
 MISS BLACKCAP ELLSTON J2
 STYLES UPGRADE J59
 BALDRIDGE ISABEL T935
 CONNEALY FRONT PAGE 0228
 KESSLERS BELL 0024
 S A V FINAL ANSWER 0035
 GMAR RITO 7044

| Act. BW | CED | BW | WW | YW | SC | Doc | Claw | Angle |
|---------|-----|------|-----|------|-------|-----|-------|-------|
| 66 | +4 | +1.3 | +57 | +111 | +1.92 | +24 | +0.36 | +0.33 |

| PAP | HP | Milk | CW | Marb | REA | \$M | \$W | \$B | \$C |
|-------|-------|------|-----|-------|-------|-----|-----|------|------|
| +1.25 | +12.2 | +28 | +47 | +0.57 | +0.57 | +87 | +60 | +146 | +276 |

LOT 30 **GMAR FLAGSTONE L002**
 BD: 1/13/23 Reg No: 20631603

HOOVER NO DOUBT
BALDRIDGE FLAGSTONE F411
 BALDRIDGE ISABEL Y69

KOUPALS B & B FIX IT 6072
GMAR FIX IT F185
 GMAR MOTIVE C041

MOGCK BULLSEYE
 MISS BLACKCAP ELLSTON J2
 STYLES UPGRADE J59
 BALDRIDGE ISABEL T935
 KOUPALS B&B FORT KNOX 2077
 B&B PHYLLIS 2041
 SOO LINE MOTIVE 9016
 GMAR DEMPSEY A388

| Act. BW | CED | BW | WW | YW | SC | Doc | Claw | Angle |
|---------|-----|------|-----|------|-------|-----|-------|-------|
| 71 | +2 | +2.8 | +60 | +111 | +0.61 | +27 | +0.41 | +0.30 |

| PAP | HP | Milk | CW | Marb | REA | \$M | \$W | \$B | \$C |
|-------|------|------|-----|-------|-------|-----|-----|------|------|
| +1.43 | +6.7 | +24 | +26 | +0.59 | +0.30 | +65 | +53 | +113 | +212 |

YOUR VOLUME SOURCE FOR PROVEN & RELIABLE CALVING EASE GENETICS!

MEATING THE GRADE ANNUAL BULL SALE



GMAR Super Duty C279



ORigen

MATERNAL GRANDSIRE TO LOT 32

LOT 32

GMAR FLAGSTONE L195

BD: 2/6/23

Reg No: 20631688

HOOVER NO DOUBT
BALDRIDGE FLAGSTONE F411
BALDRIDGE ISABEL Y69

GMAR SUPER DUTY C279
GMAR SUPER DUTY E378
GMAR RIGHT ANSWER A400

MOGCK BULLSEYE
MISS BLACKCAP ELLSTON J2
STYLES UPGRADE J59
BALDRIDGE ISABEL T935
R B ACTIVE DUTY 010
GMAR IMAGE MAKER X306
CONNEALY RIGHT ANSWER 746
GMAR PROGRAM U647

| Act. BW | CED | BW | WW | YW | SC | Doc | Claw | Angle | |
|---------|------|------|-----|-------|-------|-----|-------|-------|------|
| 87 | +7 | +0.5 | +51 | +101 | +1.18 | +33 | +0.38 | +0.28 | |
| PAP | HP | Milk | CW | Marb | REA | \$M | \$W | \$B | \$C |
| +4.04 | +8.2 | +31 | +42 | +0.36 | +0.34 | +77 | +57 | +122 | +235 |

LOT 33

GMAR FLAGSTONE L263

BD: 2/14/23

Reg No: 20667929

HOOVER NO DOUBT
BALDRIDGE FLAGSTONE F411
BALDRIDGE ISABEL Y69

V A R POWER PLAY 7018
GMAR POWER PLAY H255
THM LADY INNOVATION 3189-680

MOGCK BULLSEYE
MISS BLACKCAP ELLSTON J2
STYLES UPGRADE J59
BALDRIDGE ISABEL T935
BASIN PAYWEIGHT 1682
SANDPOINT BLACKBIRD 8809
MAR INNOVATION 251
RB LADY COMPLETE 890-3189

| Act. BW | CED | BW | WW | YW | SC | Doc | Claw | Angle | |
|---------|------|------|-----|-------|-------|-----|-------|-------|------|
| 88 | +0 | +3.0 | +77 | +139 | +1.09 | +35 | +0.46 | +0.40 | |
| PAP | HP | Milk | CW | Marb | REA | \$M | \$W | \$B | \$C |
| +1.94 | +9.3 | +20 | +59 | +1.05 | +0.72 | +65 | +61 | +187 | +308 |

LOT 34

GMAR FLAGSTONE L265

BD: 2/14/23

Reg No: 20667931

HOOVER NO DOUBT
BALDRIDGE FLAGSTONE F411
BALDRIDGE ISABEL Y69

BUBS SOUTHERN CHARM AA31
GMAR SOUTHERN CHARM G705
GMAR CAPITALIST D734

MOGCK BULLSEYE
MISS BLACKCAP ELLSTON J2
STYLES UPGRADE J59
BALDRIDGE ISABEL T935
SILVEIRAS CONVERSION 8064
HICKORY HILL ERICA 009
CONNEALY CAPITALIST 028
GMAR IMAGE MAKER X06

| Act. BW | CED | BW | WW | YW | SC | Doc | Claw | Angle | |
|---------|------|------|-----|-------|-------|-----|-------|-------|------|
| 65 | +4 | +1.3 | +66 | +111 | +2.22 | +24 | +0.32 | +0.31 | |
| PAP | HP | Milk | CW | Marb | REA | \$M | \$W | \$B | \$C |
| +1.67 | +8.8 | +22 | +36 | +1.02 | +0.50 | +67 | +62 | +144 | +254 |

LOT 35

GMAR FLAGSTONE L320

BD: 2/26/23

Reg No: 20667874

HOOVER NO DOUBT
BALDRIDGE FLAGSTONE F411
BALDRIDGE ISABEL Y69

SITZ UPWARD 307R
GMAR UPWARD A215
V A R SUSANNA 9052

MOGCK BULLSEYE
MISS BLACKCAP ELLSTON J2
STYLES UPGRADE J59
BALDRIDGE ISABEL T935
CONNEALY ONWARD
SITZ HENRIETTA PRIDE 81M
G A R PREDESTINED
V A R SUSANNA 4069

| Act. BW | CED | BW | WW | YW | SC | Doc | Claw | Angle | |
|---------|------|------|-----|-------|-------|-----|-------|-------|------|
| 90 | +1 | +3.2 | +68 | +117 | +0.57 | +22 | +0.36 | +0.31 | |
| PAP | HP | Milk | CW | Marb | REA | \$M | \$W | \$B | \$C |
| +2.85 | +8.5 | +28 | +54 | +0.83 | +0.64 | +81 | +66 | +154 | +281 |

LOT 36

GMAR FLAGSTONE L744

BD: 2/27/23

Reg No: 20668000

HOOVER NO DOUBT
BALDRIDGE FLAGSTONE F411
BALDRIDGE ISABEL Y69

HA COWBOY UP 5405
GMAR COWBOY UP F221
GMAR CONFIDENCE C210

MOGCK BULLSEYE
MISS BLACKCAP ELLSTON J2
STYLES UPGRADE J59
BALDRIDGE ISABEL T935
HA OUTSIDE 3008
HA BLACKCAP LADY 1602
CONNEALY CONFIDENCE 0100
GMAR NEW LEVEL 6374

| Act. BW | CED | BW | WW | YW | SC | Doc | Claw | Angle | |
|---------|------|------|-----|-------|-------|-----|-------|-------|------|
| 75 | +3 | +1.2 | +57 | +112 | +0.79 | +28 | +0.46 | +0.41 | |
| PAP | HP | Milk | CW | Marb | REA | \$M | \$W | \$B | \$C |
| +4.37 | +3.2 | +19 | +38 | +0.53 | +0.59 | +44 | +47 | +137 | +222 |

LOT 37

GMAR FLAGSTONE L761

BD: 3/1/23

Reg No: 20668009

HOOVER NO DOUBT
BALDRIDGE FLAGSTONE F411
BALDRIDGE ISABEL Y69

S A V RESOURCE 1441
GMAR RESOURCE D107
GMAR RITO 6146

MOGCK BULLSEYE
MISS BLACKCAP ELLSTON J2
STYLES UPGRADE J59
BALDRIDGE ISABEL T935
RITO 707 OF IDEAL 3407 7075
S A V BLACKCAP MAY 4136
RITO 112 OF 2536 RITO 616
GMAR REALLY WINDY 3218

| Act. BW | CED | BW | WW | YW | SC | Doc | Claw | Angle | |
|---------|-------|------|-----|-------|-------|-----|-------|-------|------|
| 84 | +0 | +2.6 | +69 | +124 | +1.6 | +23 | +0.49 | +0.48 | |
| PAP | HP | Milk | CW | Marb | REA | \$M | \$W | \$B | \$C |
| +3.96 | +10.0 | +20 | +53 | +0.37 | +0.71 | +57 | +56 | +139 | +237 |

LOT 38

GMAR FLAGSTONE L841

BD: 3/15/23

Reg No: 20675388

HOOVER NO DOUBT
BALDRIDGE FLAGSTONE F411
BALDRIDGE ISABEL Y69

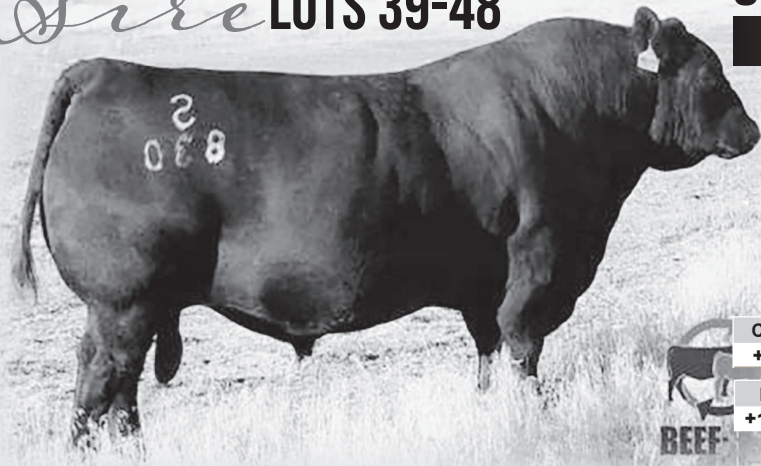
RB IMPRINT 1171-3240
GMAR IMPRESSION D769
GMAR EXTRA B305

MOGCK BULLSEYE
MISS BLACKCAP ELLSTON J2
STYLES UPGRADE J59
BALDRIDGE ISABEL T935
CONNEALY IMPRINT 8317
R B LADY PARTY 1171-844
CIRCLE L EXTRA 880
GMAR UPWARD X192

| Act. BW | CED | BW | WW | YW | SC | Doc | Claw | Angle | |
|---------|------|------|-----|-------|-------|-----|-------|-------|------|
| 78 | +6 | +1.4 | +63 | +118 | +0.61 | +26 | +0.25 | +0.33 | |
| PAP | HP | Milk | CW | Marb | REA | \$M | \$W | \$B | \$C |
| +1.90 | +6.3 | +27 | +52 | +0.45 | +0.59 | +71 | +62 | +142 | +255 |



Sire LOTS 39-48



S Wrangler 830

Reg No: *19198304

HF SYNDICATE 213Z
U-2 COALITION 206C
 U2 ERELITE 109Z
 S WHITLOCK 179
S ERICA 6196
 S ERICA 3441

CONNELLY CONSENSUS 7229
 HF MISS BLACKCAP 27R
 YOUNG DALE XCLUSIVE 25X
 U-2 ERELITE 1X
 S CHISUM 6175
 S PRIDE ANNA 709
 S CHISUM 6175
 S ERICA 1565

| | | | | | | | | |
|--------------|-------------|------------|--------------|--------------|------------|--------------|--------------|--------------|
| CED | BW | WW | YW | SC | Doc | Claw | Angle | PAP |
| +11 | -0.2 | +64 | +120 | +0.47 | +33 | +0.32 | +0.46 | -1.73 |
| HP | Milk | CW | Marb | REA | \$M | \$W | \$B | \$C |
| +11.7 | +26 | +50 | +0.31 | +0.84 | +76 | +62 | +141 | +259 |



LOT 39

From Vantage

L
O
T
39

GMAR WRANGLER L089

BD: 1/29/23

Reg No: 20633518

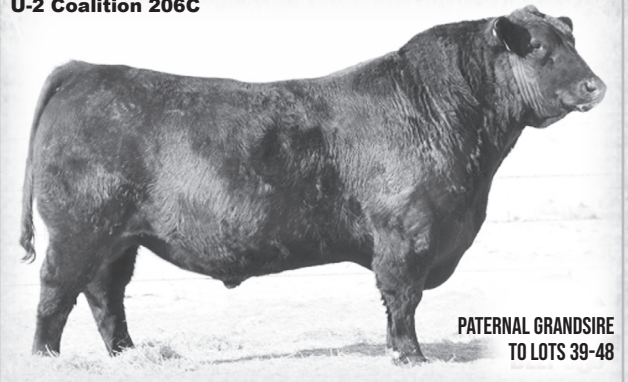
U-2 COALITION 206C
S WRANGLER 830
 S ERICA 6196

GMAR CAPTAIN 9311
LINZ LUCY CAPTAIN 8120-1414
 MONTANA LUCY 8120

HF SYNDICATE 213Z
 U2 ERELITE 109Z
 S WHITLOCK 179
 S ERICA 3441
 S A V PRESIDENT 6847
 CAV LADY IDENTITY 202-4202
 K C F BENNETT FORTRESS
 BASIN LUCY 1037

| | | | | | | | | | |
|--------------|--------------|-------------|------------|--------------|--------------|------------|--------------|--------------|-------------|
| Act. BW | CED | BW | WW | YW | SC | Doc | Claw | Angle | |
| 80 | +7 | +2.2 | +75 | +125 | +0.86 | +31 | +0.37 | +0.43 | |
| PAP | HP | Milk | CW | Marb | REA | \$M | \$W | \$B | \$C |
| -0.88 | +10.6 | +21 | +51 | +0.34 | +0.58 | +67 | +64 | +135 | +242 |

U-2 Coalition 206C



PATERNAL GRANDSIRE TO LOTS 39-48

A big-time Wrangler son that is another program animal tracing back to GMAR captain who was a \$50,000 sale feature in a past sale. L089 has outstanding mature weight and mature height to go along with a negative pap and a great docility score while still having very good foot scores and an all-around balance set of EPD's.

YOUR VOLUME SOURCE FOR PROVEN & RELIABLE CALVING EASE GENETICS!



L
O
T
40

GMAR WRANGLER L017

BD: 1/22/23

Reg No: 20633500

U-2 COALITION 206C
S WRANGLER 830
S ERICA 6196

BUBS SOUTHERN CHARM AA31
GMAR SOUTHERN CHARM J058
GMAR UPWARD Y406

HF SYNDICATE 213Z
U2 ERELITE 109Z
S WHITLOCK 179
S ERICA 3441
SILVEIRAS CONVERSION 8064
HICKORY HILL ERICA 009
SITZ UPWARD 307R
GMAR FORCE LADY 2531

| Act. BW | CED | BW | WW | YW | SC | Doc | Claw | Angle | |
|---------|------|------|-----|-------|-------|-----|-------|-------|------|
| 79 | +5 | +1.9 | +68 | +121 | +0.2 | +25 | +0.34 | +0.45 | |
| PAP | HP | Milk | CW | Marb | REA | \$M | \$W | \$B | \$C |
| +0.31 | +6.4 | +25 | +49 | +0.42 | +0.95 | +58 | +62 | +140 | +240 |

Here's a great Wrangler son that traces is back to Southern Charm and Sitz Upward, 2 bulls that are synonymous with outstanding females while still having the ability to put muscle and power to their sons. L017 has great balance from birth to growth to go along with a very good DMI score and outstanding foot scores and with very good ribeye estimation

L
O
T
41

GMAR WRANGLER L531

BD: 1/27/23

Reg No: 20735840

U-2 COALITION 206C
S WRANGLER 830
S ERICA 6196

FF EZ MONEY D217
GMAR EZ MONEY J722
GMAR RESERVE C284

HF SYNDICATE 213Z
U2 ERELITE 109Z
S WHITLOCK 179
S ERICA 3441
KR DINERO
JF SHOSHONE W42
V A R RESERVE 1111
GMAR FINAL ANSWER X310

| Act. BW | CED | BW | WW | YW | SC | Doc | Claw | Angle | |
|---------|-------|------|-----|-------|-------|-----|-------|-------|------|
| 70 | +16 | -3.6 | +45 | +93 | +0.51 | +28 | +0.45 | +0.47 | |
| PAP | HP | Milk | CW | Marb | REA | \$M | \$W | \$B | \$C |
| +0.36 | +14.8 | +38 | +32 | +0.43 | +0.83 | +85 | +61 | +122 | +243 |

L
O
T
42

GMAR WRANGLER L094

BD: 1/29/23

Reg No: 20672944

U-2 COALITION 206C
S WRANGLER 830
S ERICA 6196

SITZ SENSATION 693A
GMAR SENSATION 0030
7S BLACKBIRD JOYCE 2911

HF SYNDICATE 213Z
U2 ERELITE 109Z
S WHITLOCK 179
S ERICA 3441
A A R TEN X 7008 S A
SITZ BARBARAMERE NELL 13Y
BUSH'S DOMAIN 503
7 S BLACKBIRD JOYCE 498

| Act. BW | CED | BW | WW | YW | SC | Doc | Claw | Angle | |
|---------|-------|------|-----|-------|-------|-----|-------|-------|------|
| 76 | +12 | -0.8 | +60 | +117 | +0.52 | +12 | +0.46 | +0.45 | |
| PAP | HP | Milk | CW | Marb | REA | \$M | \$W | \$B | \$C |
| -0.89 | +11.6 | +34 | +42 | +0.61 | +0.89 | +77 | +69 | +137 | +255 |

L
O
T
43

GMAR WRANGLER L116

BD: 1/30/23

Reg No: 20633506

U-2 COALITION 206C
S WRANGLER 830
S ERICA 6196

BUBS SOUTHERN CHARM AA31
GMAR SOUTHERN CHARM J147
GMAR PATRIOT Z659

HF SYNDICATE 213Z
U2 ERELITE 109Z
S WHITLOCK 179
S ERICA 3441
SILVEIRAS CONVERSION 8064
HICKORY HILL ERICA 009
BOYD PATRIOT 9061
GMAR IMAGE MAKER W094

| Act. BW | CED | BW | WW | YW | SC | Doc | Claw | Angle | |
|---------|------|------|-----|-------|-------|-----|-------|-------|------|
| 76 | +8 | +1.2 | +65 | +101 | +1.54 | +4 | +0.38 | +0.38 | |
| PAP | HP | Milk | CW | Marb | REA | \$M | \$W | \$B | \$C |
| +0.92 | +5.1 | +23 | +38 | +0.70 | +0.86 | +69 | +70 | +130 | +238 |

L
O
T
44

GMAR WRANGLER L216

BD: 2/9/23

Reg No: 20667848

U-2 COALITION 206C
S WRANGLER 830
S ERICA 6196

CONNELLY SPUR
GMAR SPUR H220
GMAR FRONTMAN A591

HF SYNDICATE 213Z
U2 ERELITE 109Z
S WHITLOCK 179
S ERICA 3441
CONNELLY STIMULUS 8419
JAZZA OF CONANGA 8594
KESSLERS FRONTMAN ROOT
GMAR PASSWORD W439

| Act. BW | CED | BW | WW | YW | SC | Doc | Claw | Angle | |
|---------|-------|------|-----|-------|-------|-----|-------|-------|------|
| 81 | +8 | +2.2 | +59 | +109 | +0.86 | +27 | +0.36 | +0.40 | |
| PAP | HP | Milk | CW | Marb | REA | \$M | \$W | \$B | \$C |
| -0.17 | +11.8 | +21 | +35 | +0.47 | +0.66 | +80 | +52 | +126 | +243 |

L
O
T
45

GMAR WRANGLER L229

BD: 2/10/23

Reg No: 20667857

U-2 COALITION 206C
S WRANGLER 830
S ERICA 6196

SITZ STELLAR 726D
GMAR STELLAR H663
GMAR COWGIRL DIXIE F748

HF SYNDICATE 213Z
U2 ERELITE 109Z
S WHITLOCK 179
S ERICA 3441
MOHNNEN SUBSTANTIAL 272
SITZ PRIDE 2008
HA COWBOY UP 5405
COLEMAN DIXIE ERICA 8273

| Act. BW | CED | BW | WW | YW | SC | Doc | Claw | Angle | |
|---------|------|------|-----|-------|-------|-----|-------|-------|------|
| 68 | +8 | +0.6 | +67 | +113 | +0.54 | +26 | +0.35 | +0.39 | |
| PAP | HP | Milk | CW | Marb | REA | \$M | \$W | \$B | \$C |
| -0.32 | +8.6 | +33 | +34 | +0.22 | +0.76 | +75 | +75 | +101 | +206 |

L
O
T
46

GMAR WRANGLER L120

BD: 1/31/23

Reg No: 20633496

U-2 COALITION 206C
S WRANGLER 830
S ERICA 6196

FF EZ MONEY D217
GMAR EZ MONEY J260
GMAR PAYWEIGHT E776

HF SYNDICATE 213Z
U2 ERELITE 109Z
S WHITLOCK 179
S ERICA 3441
KR DINERO
JF SHOSHONE W42
BASIN PAYWEIGHT 1682
GMAR RIGHT ANSWER A527

| Act. BW | CED | BW | WW | YW | SC | Doc | Claw | Angle | |
|---------|-------|------|-----|-------|-------|-----|-------|-------|------|
| 86 | +4 | +1.8 | +73 | +136 | +0.45 | +35 | +0.44 | +0.45 | |
| PAP | HP | Milk | CW | Marb | REA | \$M | \$W | \$B | \$C |
| +0.86 | +11.7 | +27 | +53 | +0.21 | +0.50 | +67 | +66 | +117 | +219 |

LOT 47

GMAR WRANGLER L165

BD: 2/3/23

Reg No: 20633501

U-2 COALITION 206C
S WRANGLER 830
S ERICA 6196

BUBS SOUTHERN CHARM AA31
GMAR SOUTHERN CHARM J127
GMAR UPWARD Y393

HF SYNDICATE 213Z
U2 ERELITE 109Z
S WHITLOCK 179
S ERICA 3441
SILVEIRAS CONVERSION 8064
HICKORY HILL ERICA 009
SITZ UPWARD 307R
GMAR FORCE LADY 2093

| Act. BW | CED | BW | WW | YW | SC | Doc | Claw | Angle | |
|---------|------|------|-----|-------|-------|-----|-------|-------|------|
| 71 | +7 | +1.8 | +67 | +114 | +1.29 | +20 | +0.40 | +0.44 | |
| PAP | HP | Milk | CW | Marb | REA | \$M | \$W | \$B | \$C |
| +1.02 | +7.0 | +32 | +47 | +0.53 | +0.67 | +70 | +72 | +127 | +235 |

LOT 48

GMAR WRANGLER L185

BD: 2/5/23

Reg No: 20633504

U-2 COALITION 206C
S WRANGLER 830
S ERICA 6196

BUBS SOUTHERN CHARM AA31
GMAR SOUTHERN CHARM J121
GMAR FINAL PRODUCT A291

HF SYNDICATE 213Z
U2 ERELITE 109Z
S WHITLOCK 179
S ERICA 3441
SILVEIRAS CONVERSION 8064
HICKORY HILL ERICA 009
CONNEALY FINAL PRODUCT
GMAR FRONTMAN Y191

| Act. BW | CED | BW | WW | YW | SC | Doc | Claw | Angle | |
|---------|-------|------|-----|-------|-------|-----|-------|-------|------|
| 86 | -1 | +3.5 | +65 | +111 | +1.02 | +9 | +0.18 | +0.34 | |
| PAP | HP | Milk | CW | Marb | REA | \$M | \$W | \$B | \$C |
| -0.07 | +13.9 | +20 | +40 | +0.49 | +0.76 | +72 | +52 | +129 | +239 |

Sire LOTS 49-57



Sitz Virtue 11710

Reg No: *19665175

POSS ACHIEVEMENT
SITZ ACCOMPLISHMENT 720F
SITZ BARBARAMERE NELL 166D

SITZ LOGO 12964
SITZ MANOR 3708
SITZ MANOR 1061

POSS LASTING IMPACT 3118
POSS ERICA 327
S A V RESOURCE 1441
SITZ BARBARAMERE NELL 14Y
SITZ TEBOW 11860
SITZ SHAUNA 3152
SITZ COWMAKER 8708
SITZ MANOR 336

| CED | BW | WW | YW | SC | Doc | Claw | Angle | PAP |
|-------|------|-----|-------|-------|-----|-------|-------|-------|
| +3 | +3.6 | +74 | +145 | +1.28 | +22 | +0.58 | +0.48 | -0.15 |
| HP | Milk | CW | Marb | REA | \$M | \$W | \$B | \$C |
| +10.3 | +31 | +55 | +0.41 | +0.84 | +49 | +59 | +141 | +232 |

LOT 49

GMAR VIRTUE L167

BD: 2/3/23

Reg No: 20644531

SITZ ACCOMPLISHMENT 720F
SITZ VIRTUE 11710
SITZ MANOR 3708

FF DEMPSEY Y11
GMAR DEMPSEY A271
GMAR ALLIANCE U271

POSS ACHIEVEMENT
SITZ BARBARAMERE NELL 166D
SITZ LOGO 12964
SITZ MANOR 1061
CONNEALY REVENUE 7289
FF HERRIETTA PRIDE W10
KMK ALLIANCE 6595 187
GMAR NEW DESIGN 4554

| Act. BW | CED | BW | WW | YW | SC | Doc | Claw | Angle | |
|---------|------|------|-----|-------|-------|-----|-------|-------|------|
| 72 | +4 | +2.3 | +63 | +120 | +0.81 | +20 | +0.37 | +0.44 | |
| PAP | HP | Milk | CW | Marb | REA | \$M | \$W | \$B | \$C |
| +0.83 | +7.5 | +29 | +54 | +0.38 | +0.65 | +52 | +57 | +138 | +231 |

Another special sale attraction which is an outstanding Virtue son with all the power and dimensions that has made his father famous. L167 brings to the table an outstanding DMI with controlled mature weight and mature height while having a yearling weight and a top 10% for foot scores.



LOT 50

GMAR VIRTUE L148

BD: 2/1/23

Reg No: 20644454

SITZ ACCOMPLISHMENT 720F
SITZ VIRTUE 11710
SITZ MANOR 3708

HA COWBOY UP 5405
GMAR COWGIRL UP F348
GMAR RESOURCE

POSS ACHIEVEMENT
SITZ BARBARAMERE NELL 166D
SITZ LOGO 12964
SITZ MANOR 1061
HA OUTSIDE 3008
HA BLACKCAP LADY 1602
S A V RESOURCE 1441
JVC ALTUNE OF CONANGA 803

| Act. BW | CED | BW | WW | YW | SC | Doc | Claw | Angle | |
|---------|-------|------|-----|-------|-------|-----|-------|-------|------|
| 90 | +1 | +4.3 | +86 | +159 | +2.01 | +24 | +0.60 | +0.49 | |
| PAP | HP | Milk | CW | Marb | REA | \$M | \$W | \$B | \$C |
| +3.33 | +11.0 | +32 | +67 | +0.31 | +0.71 | +41 | +69 | +133 | +214 |

LOT 51

GMAR VIRTUE L141

BD: 2/1/23

Reg No: 20644508

SITZ ACCOMPLISHMENT 720F
SITZ VIRTUE 11710
SITZ MANOR 3708

SOO LINE MOTIVE 9016
GMAR MOTIVE B206
GMAR IMAGE MAKER Z425

POSS ACHIEVEMENT
SITZ BARBARAMERE NELL 166D
SITZ LOGO 12964
SITZ MANOR 1061
HF KODIAK 5R
TLA BEAUTY 5R
H A IMAGE MAKER 0415
GMAR ALLIANCE 6196

| Act. BW | CED | BW | WW | YW | SC | Doc | Claw | Angle | |
|---------|-------|------|-----|-------|-------|-----|-------|-------|------|
| 87 | +10 | +1.2 | +76 | +138 | +0.5 | +11 | +0.44 | +0.40 | |
| PAP | HP | Milk | CW | Marb | REA | \$M | \$W | \$B | \$C |
| -1.60 | +14.0 | +28 | +56 | +0.03 | +0.82 | +68 | +72 | +110 | +211 |

YOUR VOLUME SOURCE FOR PROVEN & RELIABLE CALVING EASE GENETICS!

13

MEATING THE GRADE ANNUAL BULL SALE



LOT 52

GMAR VIRTUE L225

BD: 2/10/23

Reg No: 20672876

SITZ ACCOMPLISHMENT 720F
SITZ VIRTUE 11710
SITZ MANOR 3708

BROOKS BROKEN BOW 739
GMAR BROKEN BOW 0011
MORGAN TOTAL 1215

POSS ACHIEVEMENT
SITZ BARBARAMERE NELL 166D
SITZ LOGO 12964
SITZ MANOR 1061
KM BROKEN BOW 002
LADY 5115 CM
S A V PIONEER 0437
MORGAN TOTAL TWELVE 9013

| Act. BW | CED | BW | WW | YW | SC | Doc | Claw | Angle | |
|---------|-------|------|-----|-------|-------|-----|-------|-------|------|
| 87 | +10 | -0.3 | +53 | +105 | +0.61 | +4 | +0.52 | +0.51 | |
| PAP | HP | Milk | CW | Marb | REA | \$M | \$W | \$B | \$C |
| +1.70 | +13.6 | +37 | +30 | +0.63 | +0.39 | +56 | +61 | +113 | +203 |

LOT 53

GMAR VIRTUE L093

BD: 1/29/23

Reg No: 20644532

SITZ ACCOMPLISHMENT 720F
SITZ VIRTUE 11710
SITZ MANOR 3708

MYTTY IN FOCUS
GMAR IN FOCUS Z502
GMAR IMAGE MAKER U023

POSS ACHIEVEMENT
SITZ BARBARAMERE NELL 166D
SITZ LOGO 12964
SITZ MANOR 1061
S A F FOCUS OF E R
MYTTY COUNTESS 906
H A IMAGE MAKER 0415
GMAR ALLIANCE 6134

| Act. BW | CED | BW | WW | YW | SC | Doc | Claw | Angle | |
|---------|-------|------|-----|-------|-------|-----|-------|-------|------|
| 73 | +10 | -0.1 | +58 | +102 | +1.87 | +16 | +0.42 | +0.42 | |
| PAP | HP | Milk | CW | Marb | REA | \$M | \$W | \$B | \$C |
| +1.87 | +10.5 | +26 | +38 | +0.44 | +0.34 | +80 | +64 | +120 | +236 |

LOT 54

GMAR VIRTUE L125

BD: 1/31/23

Reg No: 20644472

SITZ ACCOMPLISHMENT 720F
SITZ VIRTUE 11710
SITZ MANOR 3708

CONNELY GUINNESS
GMAR GUINNESS E745
GMAR DYNAMITE C652

POSS ACHIEVEMENT
SITZ BARBARAMERE NELL 166D
SITZ LOGO 12964
SITZ MANOR 1061
CONNELY DUBLIN 8223
PANDA OF CONANGA 3609
MOHNNEN DYNAMITE 910
CIRCLE L PRIDE 5598

| Act. BW | CED | BW | WW | YW | SC | Doc | Claw | Angle | |
|---------|------|------|-----|-------|-------|-----|-------|-------|------|
| 86 | +4 | +2.1 | +73 | +129 | +1.4 | +28 | +0.52 | +0.48 | |
| PAP | HP | Milk | CW | Marb | REA | \$M | \$W | \$B | \$C |
| +0.87 | +8.4 | +21 | +47 | +0.52 | +0.53 | +55 | +62 | +128 | +221 |

Sitz Accomplishment 720F



PATERNAL GRANDSIRE TO LOTS 49-57

LOT 55

GMAR VIRTUE L150

BD: 2/1/23

Reg No: 20644486

SITZ ACCOMPLISHMENT 720F
SITZ VIRTUE 11710
SITZ MANOR 3708

CONNELY BLACK GRANITE
GMAR BLACK GRANITE E482
MYSTIC HILL BLACKCAP 419

POSS ACHIEVEMENT
SITZ BARBARAMERE NELL 166D
SITZ LOGO 12964
SITZ MANOR 1061
CONNELY CONSENSUS 7229
EURA ELGA OF CONANGA 9109
H A JUBILATION 6344
MYSTIC HILL BLACKCAP 212

| Act. BW | CED | BW | WW | YW | SC | Doc | Claw | Angle | |
|---------|-------|------|-----|-------|-------|-----|-------|-------|------|
| 86 | +5 | +1.4 | +59 | +114 | +0.81 | +25 | +0.46 | +0.52 | |
| PAP | HP | Milk | CW | Marb | REA | \$M | \$W | \$B | \$C |
| -0.55 | +10.1 | +25 | +44 | +0.29 | +0.67 | +56 | +54 | +122 | +214 |

LOT 56

GMAR VIRTUE L192

BD: 2/6/23

Reg No: 20644449

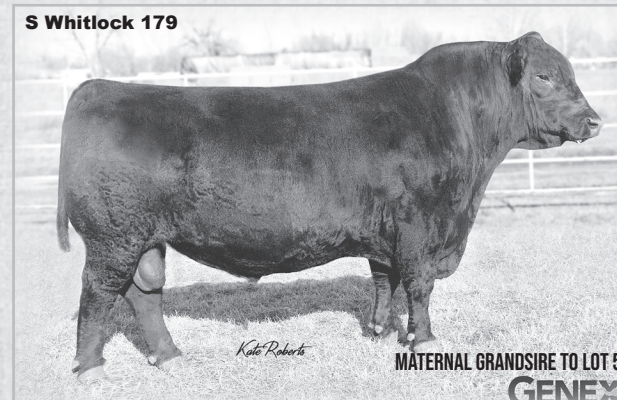
SITZ ACCOMPLISHMENT 720F
SITZ VIRTUE 11710
SITZ MANOR 3708

S WHITLOCK 179
GMAR WHITLOCK H268
GMAR COMRADE D377

POSS ACHIEVEMENT
SITZ BARBARAMERE NELL 166D
SITZ LOGO 12964
SITZ MANOR 1061
S CHISUM 6175
S PRIDE ANNA 709
CONNELY COMRADE 1385
GMAR RESERVE B339

| Act. BW | CED | BW | WW | YW | SC | Doc | Claw | Angle | |
|---------|------|------|-----|-------|-------|-----|-------|-------|------|
| 74 | +9 | -0.7 | +51 | +99 | +0.28 | +28 | +0.52 | +0.52 | |
| PAP | HP | Milk | CW | Marb | REA | \$M | \$W | \$B | \$C |
| +0.23 | +8.7 | +32 | +24 | +0.49 | +0.69 | +59 | +58 | +103 | +193 |

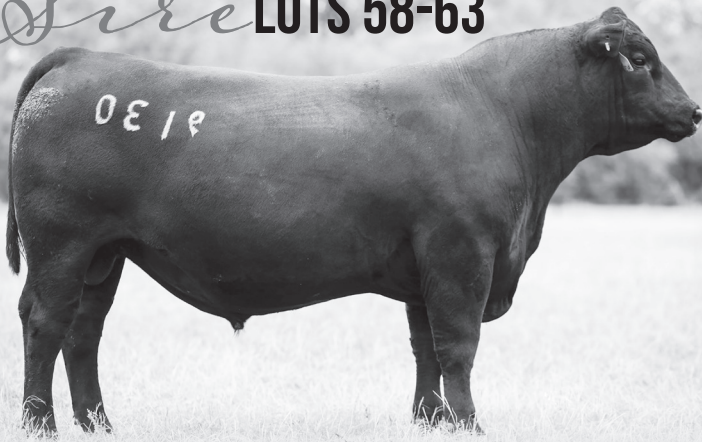
S Whitlock 179



MATERNAL GRANDSIRE TO LOT 56



Sire LOTS 58-63



L/R Pay Day 9130

Reg No: *19531167

BASIN PAYWEIGHT 1682
TEX PAYWEIGHT 5474
 TEX EMPRESS 2748

L/R COLT 45 3045
L/R CHARLIE 5110
 SUMMITCREST ELBA 1Y90

BASIN PAYWEIGHT 006S
 21AR O LASS 7017
 GDAR GAME DAY 449
 EMPRESS OF HOLIDAY 7004
 S/C MEDICINE MAN 01Y7
 SUMMITCREST BLIZZARD 0X62
 SUMMITCREST COMPLETE 1P55
 SUMMITCREST ELBA 0K96

| CED | BW | WW | YW | SC | Doc | Claw | Angle | PAP |
|------|------|-----|-------|-------|-----|-------|-------|-------|
| +11 | +0.3 | +79 | +149 | +0.97 | +25 | +0.44 | +0.43 | +1.16 |
| HP | Milk | CW | Marb | REA | \$M | \$W | \$B | \$C |
| +7.5 | +19 | +72 | +0.64 | +0.67 | +50 | +64 | +181 | +285 |

L
O
T
58

GMAR PAY DAY L538

BD: 2/6/23

Reg No: 20735843

TEX PAYWEIGHT 5474
L/R PAY DAY 9130
 L/R CHARLIE 5110

CIRCLE L EXTRA 5337
GMAR EXTRA J895
 GMAR IMPRESSION D769

BASIN PAYWEIGHT 1682
 TEX EMPRESS 2748
 L/R COLT 45 3045
 SUMMITCREST ELBA 1Y90
 CIRCLE L EXTRA 29W
 CL QUEEN 200Z
 RB IMPRINT 1171-3240
 GMAR EXTRA B305

| Act. BW | CED | BW | WW | YW | SC | Doc | Claw | Angle | |
|---------|------|------|-----|-------|-------|-----|-------|-------|------|
| 77 | +13 | -0.2 | +62 | +119 | +1.08 | +22 | +0.29 | +0.38 | |
| PAP | HP | Milk | CW | Marb | REA | \$M | \$W | \$B | \$C |
| +2.03 | +9.8 | +20 | +43 | +0.30 | +0.53 | +58 | +53 | +121 | +215 |

Here is one of the best sleep all night heifer bulls in the offering that still brings that look and power you expect from GMAR bulls. L538 has outstanding scrotal with very controlled yearling height to go along with very good CEM maternal numbers and an all-around balance set of EPD's.



Pam Vanek

L
O
T
59

GMAR PAY DAY L673

BD: 2/2/23

Reg No: 20667963

TEX PAYWEIGHT 5474
L/R PAY DAY 9130
 L/R CHARLIE 5110

LD CAPITALIST 316
GMAR CAPITALIST J908
 GMAR HIGH REGARD C163

BASIN PAYWEIGHT 1682
 TEX EMPRESS 2748
 L/R COLT 45 3045
 SUMMITCREST ELBA 1Y90
 CONNEALY CAPITALIST 028
 LD DIXIE ERICA 2053
 KG HIGH REGARD 2073
 GMAR SIGNIFICANT A202

| Act. BW | CED | BW | WW | YW | SC | Doc | Claw | Angle | |
|---------|------|------|-----|-------|-------|-----|-------|-------|------|
| 83 | +0 | +4.5 | +83 | +143 | +0.53 | +27 | +0.49 | +0.39 | |
| PAP | HP | Milk | CW | Marb | REA | \$M | \$W | \$B | \$C |
| +1.19 | +8.4 | +21 | +73 | +0.44 | +0.82 | +54 | +63 | +170 | +274 |

Outstanding Payday son that traces back to Capitalist 316 one of the most legendary bulls in our breed. 316 is known for ultimate power while not sacrificing fertility and produces outstanding females. L673 has a stunning set of EPD with a great yearling weight, perfect foot scores, and a very good Pap score with one of the best carcass weights in the offering. L673 also has a breed leading dollar F and all around great set of dollar values.



Pam Vanek

L
O
T
60

GMAR PAY DAY L520

BD: 2/5/23

Reg No: 20735836

TEX PAYWEIGHT 5474
L/R PAY DAY 9130
 L/R CHARLIE 5110

DB STUNNER G43
GMAR STUNNER J444
 GMAR BROKEN BOW G302

BASIN PAYWEIGHT 1682
 TEX EMPRESS 2748
 L/R COLT 45 3045
 SUMMITCREST ELBA 1Y90
 MUSGRAVE 316 STUNNER
 DB MS REFLECTION DAY 049
 KM BROKEN BOW 002
 GMAR RESOURCE E083

| Act. BW | CED | BW | WW | YW | SC | Doc | Claw | Angle | |
|---------|-------|------|-----|-------|-------|-----|-------|-------|------|
| 82 | +10 | +0.4 | +63 | +114 | +0.78 | +20 | +0.36 | +0.44 | |
| PAP | HP | Milk | CW | Marb | REA | \$M | \$W | \$B | \$C |
| -0.17 | +10.0 | +27 | +41 | +0.56 | +0.28 | +67 | +63 | +123 | +227 |

L
O
T
61

GMAR PAY DAY L525

BD: 2/8/23

Reg No: 20735837

TEX PAYWEIGHT 5474
L/R PAY DAY 9130
 L/R CHARLIE 5110

M R A ADVOCATE 9035
GMAR ADVOCATE J663
 GMAR RESOURCE GAL G900

BASIN PAYWEIGHT 1682
 TEX EMPRESS 2748
 L/R COLT 45 3045
 SUMMITCREST ELBA 1Y90
 KG JUSTIFIED 3023
 M R A BLACKBIRD 6362
 S A V RESOURCE 1441
 GMAR FINAL PRODUCT C605

| Act. BW | CED | BW | WW | YW | SC | Doc | Claw | Angle | |
|---------|-------|------|-----|-------|-------|-----|-------|-------|------|
| 77 | +7 | +0.7 | +72 | +136 | +1.05 | +19 | +0.23 | +0.30 | |
| PAP | HP | Milk | CW | Marb | REA | \$M | \$W | \$B | \$C |
| +1.37 | +12.4 | +21 | +55 | +0.84 | +0.46 | +70 | +62 | +156 | +272 |

YOUR VOLUME SOURCE FOR PROVEN & RELIABLE CALVING EASE GENETICS!

**LOT 62**

BD: 2/4/23

GMAR PAY DAY L676

Reg No: 20667965

TEX PAYWEIGHT 5474
L/R PAY DAY 9130
 L/R CHARLIE 5110

HOOVER ALL AMERICAN
PIERCE ALL AMERICAN J894
 PIERCE IDENTITY G994

BASIN PAYWEIGHT 1682
 TEX EMPRESS 2748
 L/R COLT 45 3045
 SUMMITCREST ELBA 1Y90
 BRUNS TOP CUT 373
 BLUEBLOOD LADY ELLSTON M3
 JLD IDENTITY 212
 PIERCE SIGNIFICANT B306

| Act. BW | CED | BW | WW | YW | SC | Doc | Claw | Angle | |
|---------|-------|------|-----|-------|-------|-----|-------|-------|------|
| 75 | +6 | +0.2 | +62 | +115 | +1.02 | +27 | +0.41 | +0.41 | |
| PAP | HP | Milk | CW | Marb | REA | \$M | \$W | \$B | \$C |
| +2.56 | +10.0 | +30 | +51 | +0.82 | +0.63 | +80 | +68 | +159 | +286 |

LOT 63

BD: 2/5/23

GMAR PAY DAY L513

Reg No: 20735833

TEX PAYWEIGHT 5474
L/R PAY DAY 9130
 L/R CHARLIE 5110

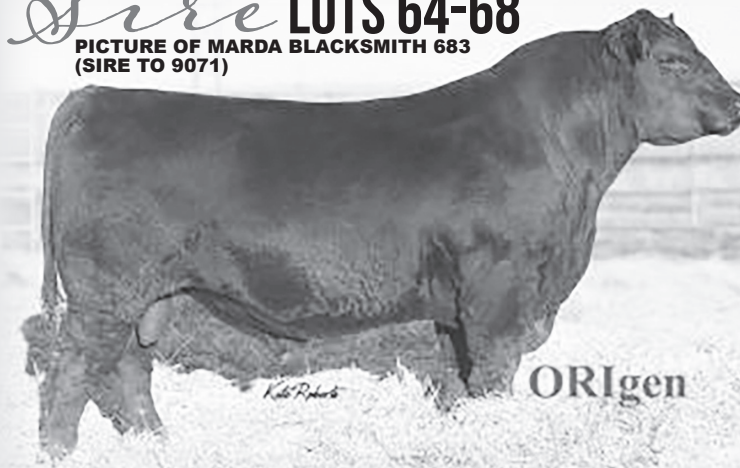
CCA BULLSEYE 8631
GMAR BULLSEYE J395
 GMAR SUPER DUTY E040

BASIN PAYWEIGHT 1682
 TEX EMPRESS 2748
 L/R COLT 45 3045
 SUMMITCREST ELBA 1Y90
 GS BULLSEYE 629
 MIZPAH RETTE 2226
 GMAR SUPER DUTY C279
 GMAR UPWARD Y098

| Act. BW | CED | BW | WW | YW | SC | Doc | Claw | Angle | |
|---------|-------|------|-----|-------|-------|-----|-------|-------|------|
| 85 | +5 | +1.1 | +72 | +128 | +1.24 | +8 | +0.41 | +0.39 | |
| PAP | HP | Milk | CW | Marb | REA | \$M | \$W | \$B | \$C |
| +1.29 | +13.9 | +21 | +49 | +0.67 | +0.90 | +70 | +66 | +148 | +262 |

Sire **LOTS 64-68**

PICTURE OF MARDA BLACKSMITH 683
 (SIRE TO 9071)

**SLC Blacksmith 9071**

Reg No: *19557361

CONNELY BLACK GRANITE
MARDA BLACKSMITH 683
 S A V BLACKCAP MAY 3092

B P F SPECIAL FOCUS 504
BASIN LUCY 0328
 BASIN LUCY 8T12

CONNELY CONSENSUS 7229
 EURA ELGA OF CONANGA 9109
 A A R TEN X 7008 S A
 S A V BLACKCAP MAY 1443
 MYTTY IN FOCUS
 B P F BLACK CASH 341
 BASIN FRANCHISE P142
 BASIN LUCY 3807

| CED | BW | WW | YW | SC | Doc | Claw | Angle | PAP |
|-------|------|-----|-------|-------|-----|-------|-------|-------|
| +13 | +0.2 | +66 | +116 | +1.29 | +11 | +0.43 | +0.38 | +2.22 |
| HP | Milk | CW | Marb | REA | \$M | \$W | \$B | \$C |
| +16.3 | +33 | +41 | +0.55 | +0.83 | +81 | +73 | +130 | +250 |

LOT 64

BD: 3/3/23

GMAR BLACKSMITH L352

Reg No: 20673670

MARDA BLACKSMITH 683
SLC BLACKSMITH 9071
 BASIN LUCY 0328

G A R ASHLAND
GMAR ASHLAND H709
 GMAR RESOURCE C491

CONNELY BLACK GRANITE
 S A V BLACKCAP MAY 3092
 B P F SPECIAL FOCUS 504
 BASIN LUCY 8T12
 G A R EARLY BIRD
 CHAIR ROCK AMBUSH 1018
 S A V RESOURCE 1441
 GMAR UPWARD X362

| Act. BW | CED | BW | WW | YW | SC | Doc | Claw | Angle | |
|---------|-------|------|-----|-------|-------|-----|-------|-------|------|
| 69 | +14 | -1.1 | +62 | +113 | +0.81 | +23 | +0.57 | +0.46 | |
| PAP | HP | Milk | CW | Marb | REA | \$M | \$W | \$B | \$C |
| +2.64 | +11.4 | +30 | +41 | +0.54 | +0.75 | +69 | +69 | +128 | +235 |

Here's one that's hard to achieve a big-time double digit CED to go along with a very negative birthweight. This Blackstone Son traces back to GAR Ashland and the mighty SAV Resource, which brings a very good mix of power and carcass. L352 has a great set of EPD starting with excellent milk scores, a very good controlled mature weight and mature height to go along with outstanding dollar M and an overall great set of dollar values.

LOT 65

BD: 3/10/23

GMAR BLACKSMITH L393

Reg No: 20673698

MARDA BLACKSMITH 683
SLC BLACKSMITH 9071
 BASIN LUCY 0328

G A R ASHLAND
GMAR ASHLAND H803
 GMAR CHISUM Z337

CONNELY BLACK GRANITE
 S A V BLACKCAP MAY 3092
 B P F SPECIAL FOCUS 504
 BASIN LUCY 8T12
 G A R EARLY BIRD
 CHAIR ROCK AMBUSH 1018
 S CHISUM 6175
 GMAR NEW DESIGN W198

| Act. BW | CED | BW | WW | YW | SC | Doc | Claw | Angle | |
|---------|-------|------|-----|-------|-------|-----|-------|-------|------|
| 77 | +10 | +0.8 | +70 | +131 | +0.99 | +18 | +0.56 | +0.46 | |
| PAP | HP | Milk | CW | Marb | REA | \$M | \$W | \$B | \$C |
| +0.08 | +13.0 | +26 | +59 | +0.57 | +1.04 | +61 | +65 | +161 | +270 |

LOT 66

BD: 3/4/23

GMAR BLACKSMITH L356

Reg No: 20726886

MARDA BLACKSMITH 683
SLC BLACKSMITH 9071
 BASIN LUCY 0328

CONNELY SPUR
GMAR SPUR G402
 GMAR EXTRA A342

CONNELY BLACK GRANITE
 S A V BLACKCAP MAY 3092
 B P F SPECIAL FOCUS 504
 BASIN LUCY 8T12
 CONNELY STIMULUS 8419
 JAZZA OF CONANGA 8594
 CIRCLE L EXTRA 880
 GMAR ALLIANCE U224

| Act. BW | CED | BW | WW | YW | SC | Doc | Claw | Angle | |
|---------|-------|------|-----|-------|-------|-----|-------|-------|------|
| 80 | +9 | +0.5 | +38 | +62 | +0.51 | +7 | +0.49 | +0.34 | |
| PAP | HP | Milk | CW | Marb | REA | \$M | \$W | \$B | \$C |
| +3.17 | +13.2 | +24 | +10 | +0.27 | +0.68 | +77 | +46 | +92 | +196 |

MEATING THE GRADE ANNUAL BULL SALE

16

YOUR VOLUME SOURCE FOR PROVEN & RELIABLE CALVING EASE GENETICS!

LOT 67

GMAR BLACKSMITH L349

BD: 3/3/23

Reg No: 20667947

MARDA BLACKSMITH 683
SLC BLACKSMITH 9071
 BASIN LUCY 0328

S WHITLOCK 179
GMAR WHITLOCK H198
 GMAR CONFIDENCE B223

CONNELLY BLACK GRANITE
 S A V BLACKCAP MAY 3092
 B P F SPECIAL FOCUS 504
 BASIN LUCY 8T12
 S CHISUM 6175
 S PRIDE ANNA 709
 CONNEALY CONFIDENCE 0100
 GMAR ALLIANCE X079

| Act. BW | CED | BW | WW | YW | SC | Doc | Claw | Angle | |
|---------|-------|------|-----|-------|-------|-----|-------|-------|------|
| 76 | +11 | -0.1 | +70 | +122 | +0.25 | +23 | +0.46 | +0.51 | |
| PAP | HP | Milk | CW | Marb | REA | \$M | \$W | \$B | \$C |
| -0.51 | +10.9 | +27 | +44 | +0.30 | +0.47 | +73 | +73 | +98 | +200 |

LOT 68

GMAR BLACKSMITH L426

BD: 3/24/23

Reg No: 20673726

MARDA BLACKSMITH 683
SLC BLACKSMITH 9071
 BASIN LUCY 0328

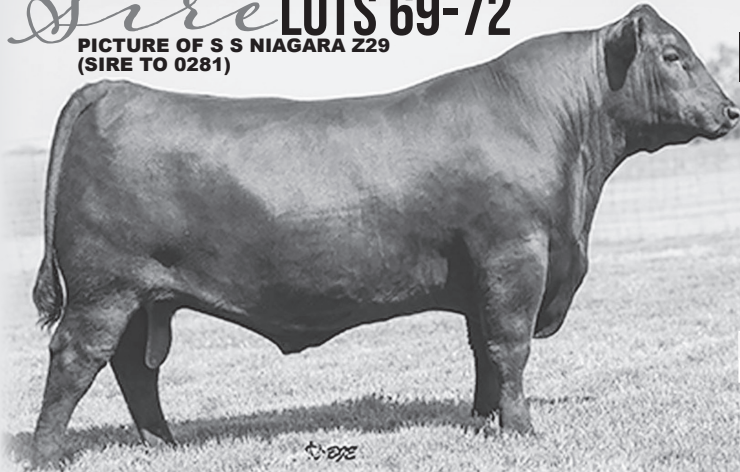
CONNELLY SPUR
GMAR SPUR H310
 GMAR RESOURCE E746

CONNELLY BLACK GRANITE
 S A V BLACKCAP MAY 3092
 B P F SPECIAL FOCUS 504
 BASIN LUCY 8T12
 CONNEALY STIMULUS 8419
 JAZZA OF CONANGA 8594
 S A V RESOURCE 1441
 GMAR RIGHT ANSWER A294

| Act. BW | CED | BW | WW | YW | SC | Doc | Claw | Angle | |
|---------|-------|------|-----|-------|-------|-----|-------|-------|------|
| 71 | +5 | +2.5 | +74 | +136 | +1.26 | +29 | +0.49 | +0.43 | |
| PAP | HP | Milk | CW | Marb | REA | \$M | \$W | \$B | \$C |
| +1.27 | +10.0 | +27 | +45 | +0.30 | +0.60 | +54 | +64 | +113 | +201 |

Sire **LOTS 69-72**

PICTURE OF S S NIAGARA Z29
 (SIRE TO 0281)



Linz Niagara 0281

Reg No: +*19703061

HOOVER DAM
S S NIAGARA Z29
 JET S S X144

MAR INNOVATION 251
CAV LADY INNOVATION 2145-617
 RB LADY STERLING 890-2145

SYDGEN C C & 7
 ERICA OF ELLSTON C124
 B/R NEW DAY 454
 JET S S T151
 CONNEALY IMPRESSION
 MAR FINAL KAHUNA 856
 HAYNES STERLING 924
 R B LADY STANDARD 305-890

| CED | BW | WW | YW | SC | Doc | Claw | Angle | PAP |
|-------|------|-----|-------|-------|-----|-------|-------|-------|
| +1 | +2.2 | +78 | +135 | +1.18 | +23 | +0.30 | +0.29 | +2.72 |
| HP | Milk | CW | Marb | REA | \$M | \$W | \$B | \$C |
| +12.3 | +21 | +50 | +1.10 | +1.04 | +79 | +69 | +174 | +305 |

LOT 69

GMAR NIAGARA L932

BD: 4/17/23

Reg No: 20707886

S S NIAGARA Z29
LINZ NIAGARA 0281
 CAV LADY INNOVATION 2145-617

QUAKER HILL RAMPAGE 0A36
GMAR RAMPAGE D119
 GMAR CONFIDENCE B256

HOOVER DAM
 JET S S X144
 MAR INNOVATION 251
 RB LADY STERLING 890-2145
 MCC DAYBREAK
 QHF BLACKCAP 6E2 0F4V16 4355
 CONNEALY CONFIDENCE 0100
 GMAR IMAGE MAKER U177

| Act. BW | CED | BW | WW | YW | SC | Doc | Claw | Angle | |
|---------|------|------|-----|-------|-------|-----|-------|-------|------|
| 78 | +0 | +3.7 | +87 | +148 | +1.16 | +27 | +0.27 | +0.29 | |
| PAP | HP | Milk | CW | Marb | REA | \$M | \$W | \$B | \$C |
| +2.61 | +6.0 | +21 | +79 | +0.61 | +1.43 | +57 | +68 | +189 | +302 |

LOT 70

GMAR NIAGRA L843

BD: 3/16/23

Reg No: 20675390

S S NIAGARA Z29
LINZ NIAGARA 0281
 CAV LADY INNOVATION 2145-617

CONNELLY CONFIDENCE 0100
GMAR CONFIDENCE C357
 GMAR NEW DESIGN 6073

HOOVER DAM
 JET S S X144
 MAR INNOVATION 251
 RB LADY STERLING 890-2145
 CONNEALY TOBIN
 BECKA GALA OF CONANGA 8281
 BON VIEW NEW DESIGN 878
 GEORGINA 6046 G M A R

| Act. BW | CED | BW | WW | YW | SC | Doc | Claw | Angle | |
|---------|-------|------|-----|-------|-------|-----|-------|-------|------|
| 80 | +5 | +0.6 | +50 | +89 | -0.04 | +13 | +0.40 | +0.39 | |
| PAP | HP | Milk | CW | Marb | REA | \$M | \$W | \$B | \$C |
| +2.59 | +14.9 | +17 | +29 | +0.75 | +0.50 | +77 | +47 | +131 | +247 |

LOT 71

GMAR NIAGRA L884

BD: 3/24/23

Reg No: 20675429

S S NIAGARA Z29
LINZ NIAGARA 0281
 CAV LADY INNOVATION 2145-617

S A V RESOURCE 1441
GMAR RESOURCE C393
 GMAR FINAL ANSWER Z215

HOOVER DAM
 JET S S X144
 MAR INNOVATION 251
 RB LADY STERLING 890-2145
 RITO 707 OF IDEAL 3407 7075
 S A V BLACKCAP MAY 4136
 S A V FINAL ANSWER 0035
 GMAR ALLIANCE 6204

| Act. BW | CED | BW | WW | YW | SC | Doc | Claw | Angle | |
|---------|-------|------|-----|-------|-------|-----|-------|-------|------|
| 82 | +1 | +0.9 | +61 | +108 | +0.53 | +26 | +0.45 | +0.44 | |
| PAP | HP | Milk | CW | Marb | REA | \$M | \$W | \$B | \$C |
| +0.84 | +13.3 | +22 | +41 | +0.77 | +0.75 | +75 | +60 | +146 | +264 |

LOT 72

GMAR NIAGARA L927

BD: 4/15/23

Reg No: 20707881

S S NIAGARA Z29
LINZ NIAGARA 0281
 CAV LADY INNOVATION 2145-617

ICC PAY RAISE 4899
GMAR PAY RAISE D603
 GMAR FRONTMAN A557

HOOVER DAM
 JET S S X144
 MAR INNOVATION 251
 RB LADY STERLING 890-2145
 MILL COULEE PAY RAISE
 ICC EVERELDA ENTENSE 8530
 KESSLERS FRONTMAN R001
 GMAR IMAGE MAKER W025

| Act. BW | CED | BW | WW | YW | SC | Doc | Claw | Angle | |
|---------|-------|------|-----|-------|-------|-----|-------|-------|------|
| 76 | +7 | +1.3 | +69 | +121 | +0.62 | +21 | +0.41 | +0.38 | |
| PAP | HP | Milk | CW | Marb | REA | \$M | \$W | \$B | \$C |
| +1.90 | +12.4 | +22 | +46 | +0.50 | +0.60 | +65 | +62 | +138 | +244 |

MEATING THE GRADE ANNUAL BULL SALE

**LOT 73****GMAR RESOURCE L948**

BD: 4/30/23

Reg No: 20707898

S A V RESOURCE 1441
JAR RESOURCE D800
COLEMAN DIXIE ERICA 8273QUAKER HILL RAMPAGE 0A36
GMAR RAMPAGE D090
GMAR RESOURCE B708RITO 707 OF IDEAL 3407 7075
S A V BLACKCAP MAY 4136
LEACHMAN RIGHT TIME
COLEMAN DIXIE ERICA 143
MCC DAYBREAK
QHF BLACKCAP 6E2 0F4V16 4355
S A V RESOURCE 1441
GMAR NEW DESIGN GAL 3196

| Act. BW | CED | BW | WW | YW | SC | Doc | Claw | Angle | |
|---------|------|------|-----|-------|-------|-----|-------|-------|------|
| 80 | -1 | +2.6 | +70 | +132 | +1.73 | +13 | +0.57 | +0.47 | |
| PAP | HP | Milk | CW | Marb | REA | \$M | \$W | \$B | \$C |
| -0.62 | +9.5 | +20 | +54 | +0.09 | +0.96 | +40 | +53 | +127 | +205 |

S A V Resource 1441



PATERNAL GRANDSIRE TO LOTS 73-77

LOT 76**GMAR RESOURCE L846**

BD: 3/16/23

Reg No: 20675393

S A V RESOURCE 1441
JAR RESOURCE D800
COLEMAN DIXIE ERICA 8273MOHNEN BREEZY 280
GMAR BREEZY C368
GMAR NEW LEVEL 6260RITO 707 OF IDEAL 3407 7075
S A V BLACKCAP MAY 4136
LEACHMAN RIGHT TIME
COLEMAN DIXIE ERICA 143
H A R B WINDY 702 JH
MOHNEN JILT 1446
IRONWOOD NEW LEVEL
GMAR MERGER GAL 9230

| Act. BW | CED | BW | WW | YW | SC | Doc | Claw | Angle | |
|---------|-------|------|-----|-------|-------|-----|-------|-------|------|
| 80 | +2 | +1.4 | +46 | +90 | +0.46 | +21 | +0.47 | +0.46 | |
| PAP | HP | Milk | CW | Marb | REA | \$M | \$W | \$B | \$C |
| -1.72 | +14.2 | +26 | +28 | +0.32 | +0.65 | +64 | +45 | +109 | +205 |



Pam Vanek

LOT 74**GMAR RESOURCE L919**

BD: 4/11/23

Reg No: 20707873

S A V RESOURCE 1441
JAR RESOURCE D800
COLEMAN DIXIE ERICA 8273DD SUPER DUTY 701
GMAR SUPER DUTY G966
GMAR BLACK GRANITE D217RITO 707 OF IDEAL 3407 7075
S A V BLACKCAP MAY 4136
LEACHMAN RIGHT TIME
COLEMAN DIXIE ERICA 143
GMAR SUPER DUTY C279
DD VIXON 403
CONNEALY BLACK GRANITE
GMAR FINAL PRODUCT A037

| Act. BW | CED | BW | WW | YW | SC | Doc | Claw | Angle | |
|---------|-------|------|-----|-------|-------|-----|-------|-------|------|
| 77 | -2 | +2.2 | +48 | +90 | +0.94 | +23 | +0.51 | +0.53 | |
| PAP | HP | Milk | CW | Marb | REA | \$M | \$W | \$B | \$C |
| -2.56 | +13.5 | +30 | +44 | -0.02 | +0.50 | +57 | +48 | +100 | +187 |

LOT 75**GMAR RESOURCE L915**

BD: 4/7/23

Reg No: 20707871

S A V RESOURCE 1441
JAR RESOURCE D800
COLEMAN DIXIE ERICA 8273DIAMOND IN THE ROUGH
GMAR DIAMOND LADY F706
GMAR RAMPAGE D136RITO 707 OF IDEAL 3407 7075
S A V BLACKCAP MAY 4136
LEACHMAN RIGHT TIME
COLEMAN DIXIE ERICA 143
DIAMOND JUSTICE 901S
DIAMOND BLACK LADY 7206
QUAKER HILL RAMPAGE 0A36
GMAR MOTIVE B056

| Act. BW | CED | BW | WW | YW | SC | Doc | Claw | Angle | |
|---------|-------|------|-----|-------|-------|-----|-------|-------|------|
| 78 | +4 | +0.7 | +57 | +102 | +0.81 | +19 | +0.52 | +0.49 | |
| PAP | HP | Milk | CW | Marb | REA | \$M | \$W | \$B | \$C |
| +2.01 | +17.4 | +17 | +31 | +0.49 | +0.56 | +62 | +47 | +117 | +214 |

LOT 77**GMAR RESOURCE L937**

BD: 4/21/23

Reg No: 20707888

S A V RESOURCE 1441
JAR RESOURCE D800
COLEMAN DIXIE ERICA 8273V A R IMPRESSION 2353
GMAR IMPRESSION C633
GMAR UPWARD A219RITO 707 OF IDEAL 3407 7075
S A V BLACKCAP MAY 4136
LEACHMAN RIGHT TIME
COLEMAN DIXIE ERICA 143
CONNEALY IMPRESSION
SANDPOINT BLACKBIRD 8809
SITZ UPWARD 307R
V A R PRIMROSE 6260

| Act. BW | CED | BW | WW | YW | SC | Doc | Claw | Angle | |
|---------|-------|------|-----|-------|-------|-----|-------|-------|------|
| 80 | +2 | +1.7 | +54 | +105 | +0.87 | +32 | +0.43 | +0.42 | |
| PAP | HP | Milk | CW | Marb | REA | \$M | \$W | \$B | \$C |
| -1.32 | +13.4 | +22 | +38 | +0.39 | +0.49 | +63 | +46 | +120 | +219 |

LOT 78**GMAR CAPITAL CRUSHER L346**

BD: 3/2/23

Reg No: 20667944

MARCYS SCALE BREAKER N PLUS
MARCYS N PLUS 0128
MARCYS FOREVER LADY 644LD CAPITALIST 316
GMAR CAPITALIST H718
GMAR FOUNDATION A306MARCYS SCALE CRUSHER
MARCYS TREASURE 227
MARCYS GAME TIME
MARCYS FOREVER LADY 424
CONNEALY CAPITALIST 028
LD DIXIE ERICA 2053
MUSGRAVE FOUNDATION
GMAR INDUSTRY X236

| Act. BW | CED | BW | WW | YW | SC | Doc | Claw | Angle | |
|---------|------|------|-----|-------|-------|-----|-------|-------|------|
| 85 | +4 | +3.0 | +71 | +126 | +0.88 | +18 | +0.50 | +0.53 | |
| PAP | HP | Milk | CW | Marb | REA | \$M | \$W | \$B | \$C |
| +2.92 | -1.4 | +24 | +62 | +0.38 | +0.76 | +32 | +61 | +148 | +224 |

Here's a bull that will draw a lot of attention. Big-time growth with absolutely stunning phenotype. L364 traces back to Marcy's scale crusher and the great Capitalist 316 both are sires that are known for outstanding females and bulls that will press the scale down. L364 has one of the best DMI scores in the offering with an overall balance set of EPD.

LOT 79

GMAR SCALE PLUS L383

BD: 3/7/23

Reg No: 20673691

MARCYS SCALE BREAKER N PLUS
MARCYS N PLUS 0128
 MARCYS FOREVER LADY 644

BUBS SOUTHERN CHARM AA31
GMAR SOUTHERN LADY H215
 GMAR UPWARD Z231

MARCYS SCALE CRUSHER
 MARCYS TREASURE 227
 MARCYS GAME TIME
 MARCYS FOREVER LADY 424
 SILVEIRAS CONVERSION 8064
 HICKORY HILL ERICA 009
 SITZ UPWARD 307R
 GMAR MERGER 2052

| Act. BW | CED | BW | WW | YW | SC | Doc | Claw | Angle | |
|---------|------|------|-----|-------|-------|-----|-------|-------|------|
| 81 | +2 | +3.8 | +65 | +116 | +0.94 | +11 | +0.52 | +0.38 | |
| PAP | HP | Milk | CW | Marb | REA | \$M | \$W | \$B | \$C |
| +1.42 | +5.7 | +27 | +60 | +0.90 | +0.95 | +47 | +56 | +174 | +273 |

BUBS Southern Charm AA31



MATERNAL GRANDSIRE LOTS 79-81, 83

LOT 80

GMAR SCALE PLUS L386

BD: 3/9/23

Reg No: 20673694

MARCYS SCALE BREAKER N PLUS
MARCYS N PLUS 0128
 MARCYS FOREVER LADY 644

BUBS SOUTHERN CHARM AA31
GMAR SOUTHERN CHARM H464
 GMAR CHISUM A582

MARCYS SCALE CRUSHER
 MARCYS TREASURE 227
 MARCYS GAME TIME
 MARCYS FOREVER LADY 424
 SILVEIRAS CONVERSION 8064
 HICKORY HILL ERICA 009
 S CHISUM 6175
 GMAR IMAGE MAKER U022

| Act. BW | CED | BW | WW | YW | SC | Doc | Claw | Angle | |
|---------|------|------|-----|-------|-------|-----|-------|-------|------|
| 88 | -2 | +4.7 | +74 | +120 | +0.92 | +22 | +0.47 | +0.53 | |
| PAP | HP | Milk | CW | Marb | REA | \$M | \$W | \$B | \$C |
| +2.24 | +5.6 | +24 | +57 | +0.46 | +0.78 | +67 | +65 | +137 | +245 |

LOT 81

GMAR SCALE PLUS L425

BD: 3/24/23

Reg No: 20673725

MARCYS SCALE BREAKER N PLUS
MARCYS N PLUS 0128
 MARCYS FOREVER LADY 644

BUBS SOUTHERN CHARM AA31
GMAR SOUTHERN CHARM G102
 GMAR IMAGE MAKER W101

MARCYS SCALE CRUSHER
 MARCYS TREASURE 227
 MARCYS GAME TIME
 MARCYS FOREVER LADY 424
 SILVEIRAS CONVERSION 8064
 HICKORY HILL ERICA 009
 H A IMAGE MAKER 0415
 GMAR RITO 7105

| Act. BW | CED | BW | WW | YW | SC | Doc | Claw | Angle | |
|---------|-------|------|-----|-------|-------|-----|-------|-------|------|
| 88 | +0 | +5.4 | +74 | +131 | +1.03 | +18 | +0.65 | +0.57 | |
| PAP | HP | Milk | CW | Marb | REA | \$M | \$W | \$B | \$C |
| +4.42 | +10.0 | +26 | +65 | +0.16 | +0.75 | +34 | +53 | +140 | +216 |

LOT 82

GMAR BLUEPRINT L895

BD: 3/28/23

Reg No: 20675439

WOODHILL BLUEPRINT
BOBCAT BLUEPRINT H43
 BOBCAT PRIMROSE 504

CONNEALY SPUR
GMAR SPUR G740
 GMAR CONFIDENCE C239

CONNEALY CONFIDENCE PLUS
 WOODHILL EVERGREEN Z291-B233
 MUSGRAVE BIG SKY
 BOBCAT LASS 601
 CONNEALY STIMULUS 8419
 JAZZA OF CONANGA 8594
 CONNEALY CONFIDENCE 0100
 GMAR RITO 6258

| Act. BW | CED | BW | WW | YW | SC | Doc | Claw | Angle | |
|---------|-------|------|-----|-------|-------|-----|-------|-------|------|
| 80 | +7 | +2.2 | +72 | +109 | -0.09 | +17 | +0.51 | +0.54 | |
| PAP | HP | Milk | CW | Marb | REA | \$M | \$W | \$B | \$C |
| +1.81 | +11.9 | +21 | +37 | +0.57 | +0.52 | +76 | +71 | +111 | +220 |

Tremendous heritage in this young bull. He traces back to Woodhill Blueprint who is one of the best Confidence Plus sons in the land and behind that is the other great female maker Connealy Spur, this bull can't help but make gorgeous, super longevity type of females. L895 excels for docility, has a controlled mature weight and mature height and very good dollar values.

Woodhill Blueprint



PATERNAL GRANDSIRE LOTS 83-87

LOT 83

GMAR BLUEPRINT L885

BD: 3/25/23

Reg No: 20675430

WOODHILL BLUEPRINT
BOBCAT BLUEPRINT H43
 BOBCAT PRIMROSE 504

BUBS SOUTHERN CHARM AA31
GMAR SOUTHERN CHARM G707
 GMAR RAMPAGE D053

CONNEALY CONFIDENCE PLUS
 WOODHILL EVERGREEN Z291-B233
 MUSGRAVE BIG SKY
 BOBCAT LASS 601
 SILVEIRAS CONVERSION 8064
 HICKORY HILL ERICA 009
 QUAKER HILL RAMPAGE 0A36
 GMAR MOTIVE B031

| Act. BW | CED | BW | WW | YW | SC | Doc | Claw | Angle | |
|---------|-------|------|-----|-------|-------|-----|-------|-------|------|
| 87 | +2 | +2.0 | +78 | +132 | +0.52 | +15 | +0.57 | +0.60 | |
| PAP | HP | Milk | CW | Marb | REA | \$M | \$W | \$B | \$C |
| +0.40 | +10.6 | +24 | +49 | +0.76 | +1.24 | +50 | +70 | +159 | +256 |

MEATING THE GRADE ANNUAL BULL SALE



LOT 84 GMAR BLUEPRINT L939

BD: 4/22/23 Reg No: 20707890

WOODHILL BLUEPRINT
BOBCAT BLUEPRINT H43
BOBCAT PRIMROSE 504

CONNEALY FINAL PRODUCT
GMAR FINAL PRODUCT A060
GMAR FINAL ANSWER Y220

CONNEALY CONFIDENCE PLUS
WOODHILL EVERGREEN Z291-B233
MUSGRAVE BIG SKY
BOBCAT LASS 601
CONNEALY PRODUCT 568
EBONISTA OF CONANGA 471
S A V FINAL ANSWER 0035
GMAR RITO 7402

| Act. BW | CED | BW | WW | YW | SC | Doc | Claw | Angle | |
|---------|-------|------|-----|-------|-------|-----|-------|-------|------|
| 75 | +4 | +1.3 | +75 | +125 | +0.14 | +2 | +0.56 | +0.52 | |
| PAP | HP | Milk | CW | Marb | REA | \$M | \$W | \$B | \$C |
| +1.88 | +15.7 | +17 | +51 | +0.79 | +0.60 | +57 | +64 | +152 | +254 |

LOT 85 GMAR BLUEPRINT L867

BD: 3/21/23 Reg No: 20675413

WOODHILL BLUEPRINT
BOBCAT BLUEPRINT H43
BOBCAT PRIMROSE 504

SOO LINE MOTIVE 9016
GMAR MOTIVE D701
GMAR IMPRESSION B506

CONNEALY CONFIDENCE PLUS
WOODHILL EVERGREEN Z291-B233
MUSGRAVE BIG SKY
BOBCAT LASS 601
HF KODIAK 5R
TLA BEAUTY 5R
DD IMPRESSION 110
GMAR UPWARD Y490

| Act. BW | CED | BW | WW | YW | SC | Doc | Claw | Angle | |
|---------|-------|------|-----|-------|-------|-----|-------|-------|------|
| 80 | +7 | +0.3 | +62 | +102 | -0.32 | +11 | +0.53 | +0.58 | |
| PAP | HP | Milk | CW | Marb | REA | \$M | \$W | \$B | \$C |
| +0.53 | +17.6 | +32 | +41 | -0.01 | +0.52 | +72 | +70 | +94 | +194 |

LOT 86 GMAR BLUEPRINT L891

BD: 3/26/23 Reg No: 20675435

WOODHILL BLUEPRINT
BOBCAT BLUEPRINT H43
BOBCAT PRIMROSE 504

QUAKER HILL RAMPAGE 0A36
GMAR RAMPAGE D722
GMAR SIGNIFICANT B381

CONNEALY CONFIDENCE PLUS
WOODHILL EVERGREEN Z291-B233
MUSGRAVE BIG SKY
BOBCAT LASS 601
MCC DAYBREAK
QHF BLACKCAP 6E2 OF4V16 4355
EXAR SIGNIFICANT 1769B
GMAR NEW DESIGN 4032

| Act. BW | CED | BW | WW | YW | SC | Doc | Claw | Angle | |
|---------|------|------|-----|-------|-------|-----|-------|-------|------|
| 75 | +4 | +2.7 | +72 | +128 | +0.3 | +13 | +0.56 | +0.56 | |
| PAP | HP | Milk | CW | Marb | REA | \$M | \$W | \$B | \$C |
| +0.63 | +6.9 | +19 | +53 | +0.54 | +0.68 | +19 | +51 | +150 | +214 |

LOT 87 GMAR BLUEPRINT L901

BD: 3/30/23 Reg No: 20675444

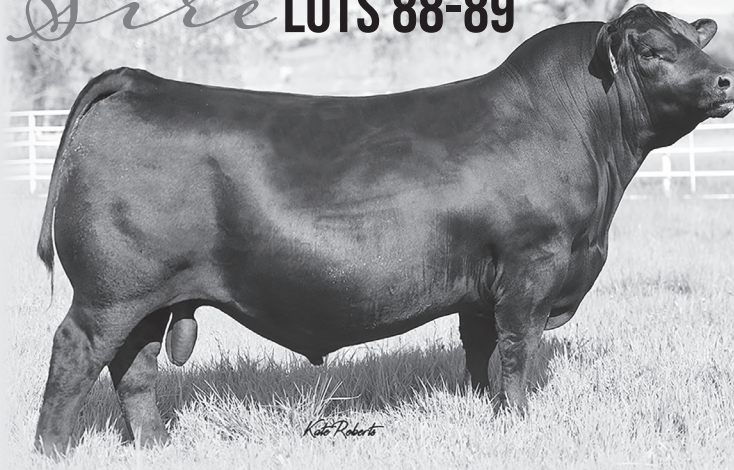
WOODHILL BLUEPRINT
BOBCAT BLUEPRINT H43
BOBCAT PRIMROSE 504

CONNEALY FINAL PRODUCT
GMAR FINAL PRODUCT Z126
GMAR RITO 7044

CONNEALY CONFIDENCE PLUS
WOODHILL EVERGREEN Z291-B233
MUSGRAVE BIG SKY
BOBCAT LASS 601
CONNEALY PRODUCT 568
EBONISTA OF CONANGA 471
RITO 616 OF 4B20 6807
GMAR NEW DESIGN 5156

| Act. BW | CED | BW | WW | YW | SC | Doc | Claw | Angle | |
|---------|-------|------|-----|-------|-------|-----|-------|-------|------|
| 70 | +4 | +0.8 | +76 | +131 | +0.25 | +13 | +0.55 | +0.53 | |
| PAP | HP | Milk | CW | Marb | REA | \$M | \$W | \$B | \$C |
| +0.40 | +13.7 | +22 | +53 | +0.36 | +0.36 | +48 | +65 | +130 | +217 |

Sire LOTS 88-89



S Architect 9501

Reg No: *19437622

KM BROKEN BOW 002
SYDGEN BLUEPRINT
SITZ FLORABELLE FANNY 4735

S WHITLOCK 179
S BLOSSOM 7514
S BLOSSOM 5525

SUMMITCREST COMPLETE 1P55
SUMMITCREST PRINCESS 0P12
SITZ INVESTMENT 660Z
SITZ FLORABELLE FANNY 2683
S CHISUM 6175
S PRIDE ANNA 709
CONNEALY COURAGE 25L
S BLOSSOM 374

| CED | BW | WW | YW | SC | Doc | Claw | Angle | PAP |
|-------|------|-----|-------|-------|------|-------|-------|-------|
| +8 | +0.3 | +92 | +153 | +1.55 | +27 | +0.38 | +0.40 | -1.03 |
| HP | Milk | CW | Marb | REA | \$M | \$W | \$B | \$C |
| +17.6 | +21 | +72 | +0.52 | +0.76 | +100 | +83 | +156 | +302 |

LOT 88 GMAR ARCHITECT L779

BD: 3/3/23 Reg No: 20676307

SYDGEN BLUEPRINT
S ARCHITECT 9501
S BLOSSOM 7514

MYTTY IN FOCUS
GMAR IN FOCUS Z051
GMAR UPWARD X362

KM BROKEN BOW 002
SITZ FLORABELLE FANNY 4735
S WHITLOCK 179
S BLOSSOM 5525
S A F FOCUS OF E R
MYTTY COUNTESS 906
SITZ UPWARD 307R
GMAR FORCE 5180

| Act. BW | CED | BW | WW | YW | SC | Doc | Claw | Angle | |
|---------|-------|------|-----|-------|-------|-----|-------|-------|------|
| 72 | +10 | +0.4 | +70 | +122 | +1.05 | +23 | +0.43 | +0.44 | |
| PAP | HP | Milk | CW | Marb | REA | \$M | \$W | \$B | \$C |
| +3.11 | +16.0 | +21 | +48 | +0.31 | +0.59 | +92 | +68 | +120 | +248 |

LOT 89 GMAR ARCHITECT L767

BD: 3/2/23 Reg No: 20676268

SYDGEN BLUEPRINT
S ARCHITECT 9501
S BLOSSOM 7514

MOHNEN DYNAMITE 910
GMAR DYNAMITE B604
GMAR TRAVELER 6036

KM BROKEN BOW 002
SITZ FLORABELLE FANNY 4735
S WHITLOCK 179
S BLOSSOM 5525
MOHNEN DYNAMITE 1356
MOHNEN RUTH 1277
S A V 8180 TRAVELER 004
GMAR MERGER GAL 9140

| Act. BW | CED | BW | WW | YW | SC | Doc | Claw | Angle | |
|---------|-------|------|-----|-------|-------|-----|-------|-------|------|
| 85 | +1 | +3.2 | +81 | +141 | +1.11 | +19 | +0.39 | +0.35 | |
| PAP | HP | Milk | CW | Marb | REA | \$M | \$W | \$B | \$C |
| +0.22 | +13.7 | +29 | +67 | +0.36 | +0.57 | +81 | +76 | +141 | +264 |

LOT 90

GMAR LOAD UP L306

BD: 2/24/23

Reg No: 20748639

KW OVERLOAD 6223
SCHAACK LOAD UP 0256
 SCHAACK MISS WIX 815

KESSLERS FRONTMAN R001
GMAR FRONTMAN A591
 GMAR PASSWORD W439

PLATTEMERE WEIGH UP K360
 KW 3137 CONSENSUS 7229 3033
 V A R LEGEND 5019
 MISS WIX 0175 OF MC CUMER
 CONNEALY FRONT PAGE 0228
 KESSLERS BELL 0024
 BOYD PASSWORD 6077
 GMAR SOUTH KUGERRAND 3191

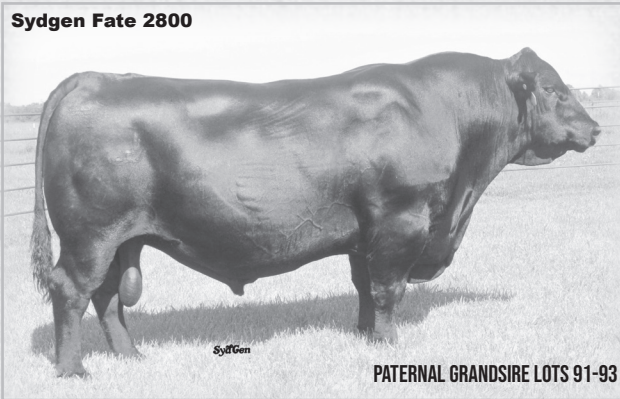
| Act. BW | CED | BW | WW | YW | SC | Doc | Claw | Angle | |
|---------|------|------|-----|-------|-------|-----|-------|-------|------|
| 73 | +11 | +1.0 | +55 | +101 | +0.35 | +25 | +0.56 | +0.49 | |
| PAP | HP | Milk | CW | Marb | REA | \$M | \$W | \$B | \$C |
| +2.39 | +7.2 | +21 | +36 | +0.52 | +0.62 | +55 | +51 | +128 | +221 |

Schaack Load Up 0256



SIRE TO LOT 90

Syngen Fate 2800



PATERNAL GRANDSIRE LOTS 91-93

LOT 91

GMAR FATE L933

BD: 4/18/23

Reg No: 20707887

SYDGEN FATE 2800
BS FATE D72
 BS LADY 329

QUAKER HILL RAMPAGE 0A36
GMAR RAMPAGE E728
 GMAR IMPRESSION C601

SYDGEN TRUST 6228
 SYDGEN HEROINE 9808
 CONNEALY CONSENSUS 7229
 BS LADY Y88
 MCC DAYBREAK
 QHF BLACKCAP 6E2 OF4V16 4355
 DD IMPRESSION 110
 GMAR UPWARD X199

| Act. BW | CED | BW | WW | YW | SC | Doc | Claw | Angle | |
|---------|------|------|-----|-------|-------|-----|-------|-------|------|
| 72 | +3 | +2.9 | +93 | +152 | +0.94 | +11 | +0.53 | +0.49 | |
| PAP | HP | Milk | CW | Marb | REA | \$M | \$W | \$B | \$C |
| +3.14 | +4.1 | +18 | +69 | +0.50 | +1.20 | +53 | +78 | +153 | +251 |

LOT 92

GMAR FATE L897

BD: 3/29/23

Reg No: 20675441

SYDGEN FATE 2800
BS FATE D72
 BS LADY 329

CONNEALY SPUR
GMAR SPUR H197
 GMAR FINAL ANSWER Y048

SYDGEN TRUST 6228
 SYDGEN HEROINE 9808
 CONNEALY CONSENSUS 7229
 BS LADY Y88
 CONNEALY STIMULUS 8419
 JAZZA OF CONANGA 8594
 S A V FINAL ANSWER 0035
 GMAR REALLY WINDY 4013

| Act. BW | CED | BW | WW | YW | SC | Doc | Claw | Angle | |
|---------|-------|------|-----|-------|-------|-----|-------|-------|------|
| 80 | +8 | -0.2 | +53 | +95 | +2.08 | +12 | +0.64 | +0.55 | |
| PAP | HP | Milk | CW | Marb | REA | \$M | \$W | \$B | \$C |
| +0.28 | +14.6 | +30 | +41 | +0.31 | +0.51 | +71 | +61 | +112 | +216 |

LOT 93

GMAR FATE L892

BD: 3/26/23

Reg No: 20675436

SYDGEN FATE 2800
BS FATE D72
 BS LADY 329

G A R ASHLAND
GMAR ASHLAND H731
 GMAR IMPRESSION B506

SYDGEN TRUST 6228
 SYDGEN HEROINE 9808
 CONNEALY CONSENSUS 7229
 BS LADY Y88
 G A R EARLY BIRD
 CHAIR ROCK AMBUSH 1018
 DD IMPRESSION 110
 GMAR UPWARD Y490

| Act. BW | CED | BW | WW | YW | SC | Doc | Claw | Angle | |
|---------|------|------|-----|-------|-------|-----|-------|-------|------|
| 75 | +8 | +1.9 | +81 | +131 | +1.94 | +13 | +0.68 | +0.55 | |
| PAP | HP | Milk | CW | Marb | REA | \$M | \$W | \$B | \$C |
| +2.70 | +7.5 | +23 | +60 | +0.66 | +0.66 | +64 | +79 | +147 | +255 |



YOUR VOLUME SOURCE FOR PROVEN & RELIABLE CALVING EASE GENETICS!

21

MEATING THE GRADE ANNUAL BULL SALE

**LOT 94**

BD: 2/26/23

GMAR LOGO L319

Reg No: 20667873

SITZ LOGO 12964
21AR LOGO 0023
21AR ESTRADA 8619BUBS SOUTHERN CHARM AA31
GMAR SOUTHERN CHARM G737
GMAR RAMPAGE D084SITZ TEBOW 11860
SITZ SHAUNA 3152
21AR UNION 5316
21AR ESTRADA 3247
SILVEIRAS CONVERSION 8064
HICKORY HILL ERICA 009
QUAKER HILL RAMPAGE 0A36
GMAR MOTIVE B206

| Act. BW | CED | BW | WW | YW | SC | Doc | Claw | Angle |
|---------|-----|------|-----|------|------|-----|-------|-------|
| 83 | +7 | +0.6 | +65 | +107 | +0.7 | +20 | +0.51 | +0.51 |

| PAP | HP | Milk | CW | Marb | REA | \$M | \$W | \$B | \$C |
|-------|-------|------|-----|-------|-------|-----|-----|------|------|
| +1.80 | +11.0 | +30 | +38 | +0.42 | +0.43 | +57 | +71 | +107 | +196 |

Here is a very good heifer bull with real power and natural depth. L319 traces back to Sitz Logo and Southern Charm, 2 bulls that are synonymous with females and longevity. L319 has an outstanding DMI to go along with very controlled mature weight and mature height, and a very good milk score.

LOT 95

BD: 3/16/23

GMAR LOADED L845

Reg No: 20675392

BALDRIDGE 38 SPECIAL
VARILEK LOADED 0038 32
VARILEK PRIDE 6098 8002DD IDENTITY 306
GMAR IDENTITY C532
GMAR FINAL ANSWER Y462EF COMMANDO 1366
BALDRIDGE ISABEL Y69
VARILEK CONFIDENCE 3004 0
VARILEK PRIDE 057 6098
KOUPLS B&B IDENTITY
DD MOLLY 617 NEWSLINE
S A V FINAL ANSWER 0035
JVC ALTUNE OF CONANGA 803

| Act. BW | CED | BW | WW | YW | SC | Doc | Claw | Angle |
|---------|-----|------|-----|------|-------|-----|-------|-------|
| 85 | +4 | +0.5 | +64 | +115 | +1.53 | +13 | +0.51 | +0.53 |

| PAP | HP | Milk | CW | Marb | REA | \$M | \$W | \$B | \$C |
|-------|------|------|-----|-------|-------|-----|-----|------|------|
| +4.07 | +9.8 | +46 | +67 | +1.01 | +0.79 | +68 | +80 | +177 | +298 |

Here is a very unique heifer bull that traces to Varilek Loaded and back to the true power bull Identity, another sire, that is known for outstanding females. L845 has outstanding scrotal and heifer pregnancy scores to go along with the best combination of marbling and ribeye in the entire offering. He also has one of the top dollar C's of the day.

**LOT 95****Varilek Loaded 0038 32**

SIRE OF LOTS 95-98

LOT 96

BD: 1/23/23

GMAR LOADED L026

Reg No: 20631614

BALDRIDGE 38 SPECIAL
VARILEK LOADED 0038 32
VARILEK PRIDE 6098 8002SITZ UPWARD 307R
GMAR UPWARD Z133
GMAR NEW LEVEL 5021EF COMMANDO 1366
BALDRIDGE ISABEL Y69
VARILEK CONFIDENCE 3004 0
VARILEK PRIDE 057 6098
CONNELLY ONWARD
SITZ HENRIETTA PRIDE 81M
IRONWOOD NEW LEVEL
GMAR MERGER GAL 9230

| Act. BW | CED | BW | WW | YW | SC | Doc | Claw | Angle |
|---------|-----|------|-----|------|-------|-----|-------|-------|
| 81 | +8 | +0.3 | +74 | +130 | +0.93 | +15 | +0.51 | +0.57 |

| PAP | HP | Milk | CW | Marb | REA | \$M | \$W | \$B | \$C |
|-------|-------|------|-----|-------|-------|-----|-----|------|------|
| +2.68 | +11.5 | +31 | +64 | +0.51 | +0.62 | +65 | +77 | +144 | +252 |

LOT 97

BD: 3/11/23

GMAR LOADED L396

Reg No: 20673701

BALDRIDGE 38 SPECIAL
VARILEK LOADED 0038 32
VARILEK PRIDE 6098 8002JMB TRACTION 292
GMAR TRACTION F077
GMAR FRONTMAN Y081EF COMMANDO 1366
BALDRIDGE ISABEL Y69
VARILEK CONFIDENCE 3004 0
VARILEK PRIDE 057 6098
SITZ TOP GAME 561X
JMB EMULOTA 013
KESSLERS FRONTMAN R001
GMAR IMAGE MAKER W057

| Act. BW | CED | BW | WW | YW | SC | Doc | Claw | Angle |
|---------|-----|------|-----|------|-------|-----|-------|-------|
| 82 | +8 | -0.1 | +85 | +150 | +1.23 | +2 | +0.37 | +0.55 |

| PAP | HP | Milk | CW | Marb | REA | \$M | \$W | \$B | \$C |
|-------|-------|------|-----|-------|-------|-----|-----|------|------|
| +2.34 | +12.9 | +38 | +70 | +0.98 | +0.57 | +81 | +94 | +172 | +304 |

LOT 98

BD: 2/6/23

GMAR LOADED L196

Reg No: 20631689

BALDRIDGE 38 SPECIAL
VARILEK LOADED 0038 32
VARILEK PRIDE 6098 8002CONNELLY FINAL PRODUCT
GMAR FINAL PRODUCT Z165
GMAR ALLIANCE 5222EF COMMANDO 1366
BALDRIDGE ISABEL Y69
VARILEK CONFIDENCE 3004 0
VARILEK PRIDE 057 6098
CONNELLY PRODUCT 568
EBONISTA OF CONANGA 471
KMK ALLIANCE 6595 187
GMAR FORCE LADY 3219

| Act. BW | CED | BW | WW | YW | SC | Doc | Claw | Angle |
|---------|-----|------|-----|------|-------|-----|-------|-------|
| 82 | +0 | +2.5 | +65 | +104 | +0.68 | +19 | +0.44 | +0.58 |

| PAP | HP | Milk | CW | Marb | REA | \$M | \$W | \$B | \$C |
|-------|-------|------|-----|-------|-------|-----|-----|-----|------|
| +1.66 | +13.5 | +37 | +33 | +0.34 | +0.36 | +78 | +74 | +92 | +197 |

MEATING THE GRADE ANNUAL BULL SALE

LOT 99

GMAR JUSTIFIED L420

BD: 3/22/23

Reg No: 20673721

KG JUSTIFIED 3023
BOYD JUSTIFY 0201
BOYD ABIGALE 0001

WK BOBCAT
GMAR BOBCAT Z591
GMAR ALLIANCE 6083

CONNELLY JUDGMENT
KG MISS MAGIC 1443
S A V PIONEER 7301
S A V ABIGALE 8076
CONNELLY RIGHT ANSWER 746
WK MISS ANGUS 7127
KMK ALLIANCE 6595 187
GMAR NEW DESIGN 4225

| Act. BW | CED | BW | WW | YW | SC | Doc | Claw | Angle | |
|---------|-------|------|-----|-------|-------|-----|-------|-------|------|
| 77 | +13 | -0.3 | +75 | +127 | +0.54 | +21 | +0.47 | +0.47 | |
| PAP | HP | Milk | CW | Marb | REA | \$M | \$W | \$B | \$C |
| +2.58 | +10.8 | +27 | +47 | +0.46 | +0.32 | +61 | +74 | +121 | +218 |

This special sale attraction is a great heifer bull with a double digit CED to go along with a great birth to growth spread. L420 traces back to Boyd Justify a bull that is really picking up steam in the industry. L420 has very good mature weight and mature height to go along with an excellent milk score and an all-around balance set of EPD'S.



Pam Vanck

KG Justified 3023



PATERNAL GRANDSIRE LOT 100-101

LOT 100

GMAR JUSTIFIED L304

BD: 2/23/23

Reg No: 20667867

KG JUSTIFIED 3023
BOYD JUSTIFY 0201
BOYD ABIGALE 0001

CONNELLY CAPITALIST 028
GMAR CAPITALIST E212
GMAR SIGNIFICANT B325

CONNELLY JUDGMENT
KG MISS MAGIC 1443
S A V PIONEER 7301
S A V ABIGALE 8076
S A V FINAL ANSWER 0035
PRIDES PITA OF CONANGA 8821
EXAR SIGNIFICANT 1769B
GMAR FRONTMAN Z066

| Act. BW | CED | BW | WW | YW | SC | Doc | Claw | Angle | |
|---------|-------|------|-----|-------|-------|-----|-------|-------|------|
| 68 | +13 | -1.9 | +54 | +93 | +0.98 | +11 | +0.39 | +0.38 | |
| PAP | HP | Milk | CW | Marb | REA | \$M | \$W | \$B | \$C |
| +0.93 | +15.6 | +13 | +12 | +0.59 | +0.21 | +74 | +49 | +89 | +189 |

AMERICAN ANGUS ASSOCIATION SELECTION TOOLS

Expected Progeny Difference (EPD), is the prediction of how future progeny of each animal are expected to perform relative to the progeny of other animals listed in the database. EPDs are expressed in units of measure for the trait, plus or minus. Interim EPDs may appear on young animals when their performance has yet to be incorporated into the American Angus Association National Cattle Evaluation (NCE) procedures. This EPD will be preceded by an "I", and may or may not include the animal's own performance record for a particular trait, depending on its availability, appropriate contemporary grouping, or data edits needed for NCE.

Accuracy (ACC), is the reliability that can be placed on the EPD. Accuracy will range from 0 to 1 with an accuracy closer to 1.0 indicating higher reliability. Accuracy is impacted by the amount of information that is included in the analysis including individual genotype and performance records as well as number of progeny and ancestral records.

PRODUCTION

Calving Ease Direct (CED), expressed as a difference in percentage of unassisted births, with a higher value indicating greater calving ease in first-calf heifers. It predicts the average difference in ease with which a sire's calves will be born when he is bred to first-calf heifers.

Birth Weight (BW), expressed in pounds, is a predictor of a sire's ability to transmit birth weight to his progeny compared to that of other sires.

Weaning Weight (WW), expressed in pounds, is a predictor of a sire's ability to transmit weaning growth to his progeny compared to that of other sires.

Yearling Weight (YW), expressed in pounds, is a predictor of a sire's ability to transmit yearling growth to his progeny compared to that of other sires.

Residual Average Daily Gain (RADG), feed efficiency expressed in pounds per day, is a predictor of a sire's genetic ability for post-weaning gain in future progeny compared to that of other sires, given a constant amount of feed consumed.

Dry Matter Intake (DMI), expressed in pounds per day, is a predictor of difference in transmitting ability for feed intake during the post-weaning phase, compared to that of other sires.

Yearling Height (YH), expressed in inches, is a predictor of a sire's ability to transmit yearling height compared to that of other sires.

Scrotal Circumference (SC), expressed in centimeters, is a predictor of the difference in transmitting scrotal size compared to that of other sires.

MANAGEMENT

Claw Set (Claw), expressed in units of claw-set score, a lower EPD is more favorable, indicating a sire will produce progeny with more symmetrical, even and appropriately spaced toes compared to another sire.

Foot Angle (Angle), expressed in units of foot-angle score, a lower EPD is more favorable, indicating a sire will produce progeny with an angle closer to 45 degrees at the pastern and appropriate toe length and heel depth compared to another sire.

Docility (DOC), expressed as a difference in yearling cattle temperament, with a higher value indicating more favorable docility in a sire's offspring compared to another sire.

Pulmonary Arterial Pressure EPD (PAP), expressed in millimeters of Mercury (mmHg), with a lower EPD being more favorable indicating a sire should produce progeny with a lower PAP score to decrease the risk of progeny contracting high altitude disease most commonly experienced at 5,500 ft or greater in elevation.

Hair Shed EPD (HS), expressed in units of hair shed score, with a lower EPD being more favorable. This indicates a sire should produce progeny who shed their winter coat earlier in the spring and has improved environmental adaptability in heat stressed areas and grazing endophyte-infected (hot) fescue.

MATERNAL

Heifer Pregnancy (HP), is a selection tool to increase the probability or chance of a sire's daughters becoming pregnant as first-calf heifers during a normal breeding season. A higher EPD is the more favorable direction, and the EPD is reported in percentage units.

Calving Ease Maternal (CEM), expressed as a difference in percentage of unassisted births, with a higher value indicating greater calving ease in first-calf daughters. It predicts the average ease with which a sire's daughters will calve as first-calf heifers when compared to daughters of other sires.

Maternal Milk (Milk), expressed in pounds of calf weaned, is a predictor of a sire's genetic merit for milk and mothering ability in his daughters. In other words, it is the part of the calf's weaning weight attributes to milk and mothering ability.

Mature Weight (MW), expressed in pounds, is a predictor of the difference in mature weight of daughters of a sire compared to the daughters of other sires.

Mature Height (MH), expressed in inches, is a predictor of the difference in mature height of a sire's daughters compared to daughters of other sires.

CARCASS

Carcass Weight (CW), expressed in pounds, is a predictor of the differences in hot carcass weight of a sire's progeny compared to progeny of other sires.

Marbling (Marb), expressed as a fraction of the difference in USDA marbling score of a sire's progeny compared to progeny of other sires.

Ribeye Area (RE), expressed in square inches, is a predictor of the difference in ribeye area of a sire's progeny compared to progeny of other sires.

Fat Thickness EPD (Fat), expressed in inches, is a predictor of the differences in external fat thickness at the 12th rib (as measured between the 12th and 13th ribs) of a sire's progeny compared to progeny of other sires.

\$VALUE INDEXES

\$Value Indexes, expressed in dollars per head, are multi-trait selection indexes where a higher value suggests more profit. The \$Value is an estimate of how future progeny of each sire are expected to perform, on average, compared to progeny of other sires if sires were randomly mated to cows and if calves were exposed to the same environment.

Maternal Weaned Calf Value (\$M), expressed in dollars per head, predicts profitability differences in progeny due to genetics from conception to weaning by decreasing mature cow size and improving docility, foot structure and fertility while maintaining weaning weights consistent with today's production.

Weaned Calf Value (\$W), expressed in dollars per head, provides the expected difference in future progeny pre-weaning performance from birth to weaning.

Energy Value (\$EN), expressed in dollar savings per cow per year with a larger value being more favorable. It assesses differences in cow energy requirements, due to maternal milk and mature cow size.

Feedlot Value (\$F), expressed in dollars per head, is the expected average difference in future progeny performance for post-weaning feedlot merit (growth and feed efficiency) compared to progeny of other sires assuming producers retain ownership of cattle through the feedlot phase and sell on a carcass-weight basis.

Grid Value (\$G), expressed in dollars per carcass, is the expected average difference in future progeny performance for carcass grid merit, including quality and yield grade attributes, compared to progeny of other sires.

Beef Value (\$B), expressed in dollars per carcass, represents the expected average differences in the progeny post-weaning performance and carcass value compared to progeny of other sires. This index assumes commercial producers wean all male and female progeny, retain ownership of these animals through the feedlot and sell on a carcass merit grid.

Combined Value (\$C), expressed in dollars per head, which includes all traits that make up both Maternal Weaned Calf Value (\$M) and Beef Value (\$B) with the objective that commercial producers will replace 20% of their breeding females per year with replacement heifers retained within their own herd. The remaining cull heifer and steer progeny are then assumed to be sent to the feedlot where the producers retain ownership of those cattle and sell them on a quality-based carcass merit grid.

MEATING THE GRADE ANNUAL BULL SALE



LOT 101

Pam Vanek

MEATING THE GRADE ANNUAL BULL SALE

LOT 101

GMAR LINCOLN L851

BD: 3/17/23

Reg No: 20875045

LD CAPITALIST 316
BOYD LINCOLN 9023
BOYD EMBLYNETTE 4014

CONNEALY COMRADE 1385
GMAR COMRADE D274
GMAR PATRIOT Z646

CONNEALY CAPITALIST 028
LD DIXIE ERICA 2053
V A R RESERVE 1111
BOYD EMBLYNETTE 2200
CONNEALY CONSENSUS 7229
HAPPY GEE OF CONANGA 919
BOYD PATRIOT 9061
GMAR 616 6087

| Act. BW | CED | BW | WW | YW | SC | Doc | Claw | Angle |
|---------|-----|------|-----|------|-------|-----|-------|-------|
| 83 | +14 | -0.3 | +57 | +104 | +0.81 | +31 | +0.43 | +0.44 |

| PAP | HP | Milk | CW | Marb | REA | \$M | \$W | \$B | \$C |
|-------|------|------|-----|-------|-------|-----|-----|------|------|
| -1.06 | +7.1 | +19 | +30 | +0.49 | +0.54 | +65 | +53 | +127 | +230 |

Here's a bull with a very unique pedigree that is truly a heifer bull, Lot 101 has a great CED and a negative birthweight. L851 has very good foot scores, one of the better \$M's of the day to go along with all the power and dimension you would expect from a 316 descendent.

LOT 102

GMAR LINCOLN L863

BD: 3/19/23

Reg No: 20675409

LD CAPITALIST 316
BOYD LINCOLN 9023
BOYD EMBLYNETTE 4014

S A V RESOURCE 1441
GMAR RESOURCE D074
CCAR SUNFLOWER Z078

CONNEALY CAPITALIST 028
LD DIXIE ERICA 2053
V A R RESERVE 1111
BOYD EMBLYNETTE 2200
RITO 707 OF IDEAL 3407 7075
S A V BLACKCAP MAY 4136
IDEAL 7275 OF 5V3 1431
CCAR SUNFLOWER W474

| Act. BW | CED | BW | WW | YW | SC | Doc | Claw | Angle |
|---------|-----|------|-----|------|-------|-----|-------|-------|
| 87 | +10 | +1.0 | +53 | +102 | +0.89 | +23 | +0.45 | +0.45 |

| PAP | HP | Milk | CW | Marb | REA | \$M | \$W | \$B | \$C |
|-------|------|------|-----|-------|-------|-----|-----|------|------|
| -1.03 | +9.9 | +17 | +24 | +0.81 | +0.25 | +53 | +43 | +118 | +206 |



LOT 103 **GMAR PLAYBOOK L909**
BD: 4/3/23 Reg No: 20675451

TEX PLAYBOOK 5437
BOYD COACH 7127
BOYD ROSETTA 4300

FF EZ MONEY D217
GMAR EZ MONEY H762
GMAR RAMPAGE D012

BASIN PAYWEIGHT 1682
RITA 1C43 OF 9M26 COMPLETE
EXAR DENVER 2002B
S A V ROSETTA 9123
KR DINERO
JF SHOSHONE W42
QUAKER HILL RAMPAGE 0A36
RTAF EVERELDA INTENSE 5440

| Act. BW | CED | BW | WW | YW | SC | Doc | Claw | Angle | |
|---------|------|------|-----|-------|-------|-----|-------|-------|------|
| 74 | +8 | +1.9 | +53 | +96 | +0.01 | +25 | +0.54 | +0.51 | |
| PAP | HP | Milk | CW | Marb | REA | \$M | \$W | \$B | \$C |
| +0.01 | +9.2 | +30 | +38 | +0.64 | +0.71 | +72 | +58 | +133 | +245 |



Pam Vanek

LOT 104 **GMAR COACH L910**
BD: 4/4/23 Reg No: 20707866

TEX PLAYBOOK 5437
BOYD COACH 7127
BOYD ROSETTA 4300

KESSLERS FRONTMAN R001
GMAR FRONTMAN A135
GMAR SITZ UPWARD Y434

BASIN PAYWEIGHT 1682
RITA 1C43 OF 9M26 COMPLETE
EXAR DENVER 2002B
S A V ROSETTA 9123
CONNELLY FRONT PAGE 0228
KESSLERS BELL 0024
SITZ UPWARD 307R
GMAR NEW DESIGN 5334

| Act. BW | CED | BW | WW | YW | SC | Doc | Claw | Angle | |
|---------|------|------|-----|-------|-------|-----|-------|-------|------|
| 80 | +11 | +1.3 | +46 | +89 | +0.06 | +20 | +0.62 | +0.65 | |
| PAP | HP | Milk | CW | Marb | REA | \$M | \$W | \$B | \$C |
| -0.59 | +9.5 | +30 | +37 | +0.57 | +0.51 | +61 | +52 | +134 | +235 |

LOT 105 **GMAR GENERATION L433**
BD: 3/27/23 Reg No: 20688041

DIAMOND GENERATION 41D2
GB GENERATION K04F
GB RACHEL C04C

S A V RESOURCE 1441
GMAR RESOURCE G164
CCAR SUNFLOWER Z078

V A R GENERATION 2100
DIAMOND JANNET 701B
S A V WIND CHILL 3442
GB RACHEL F04X
RITO 707 OF IDEAL 3407 7075
S A V BLACKCAP MAY 4136
IDEAL 7275 OF 5V3 1431
CCAR SUNFLOWER W474

| Act. BW | CED | BW | WW | YW | SC | Doc | Claw | Angle | |
|---------|------|------|-----|-------|-------|-----|-------|-------|------|
| 84 | -5 | +4.3 | +81 | +143 | +1.38 | +28 | +0.51 | +0.39 | |
| PAP | HP | Milk | CW | Marb | REA | \$M | \$W | \$B | \$C |
| +2.37 | +8.7 | +21 | +70 | +0.43 | +0.82 | +47 | +60 | +152 | +244 |

Here's one of the big-time cowboys that has that power and dimension all Cowboys like to see. L433 has one of the best scrotal scores to go along with perfect milk EPD. L433 has outstanding mature weight and mature height to go along with great foot scores and one of the best carcass weights in the offering.

LOT 106 **GMAR GENERATION L438**
BD: 4/4/23 Reg No: 20688046

DIAMOND GENERATION 41D2
GB GENERATION K04F
GB RACHEL C04C

KOUPALS B & B FIX IT 6072
GMAR FIX IT F347
GMAR UPWARD X192

V A R GENERATION 2100
DIAMOND JANNET 701B
S A V WIND CHILL 3442
GB RACHEL F04X
KOUPALS B&B FORT KNOX 2077
B&B PHYLLIS 2041
SITZ UPWARD 307R
GMAR DATELINE LADY 2164

| Act. BW | CED | BW | WW | YW | SC | Doc | Claw | Angle | |
|---------|-------|------|-----|-------|-------|-----|-------|-------|------|
| 71 | +10 | -0.9 | +54 | +100 | +0.38 | +29 | +0.39 | +0.41 | |
| PAP | HP | Milk | CW | Marb | REA | \$M | \$W | \$B | \$C |
| +1.61 | +10.5 | +22 | +38 | +0.15 | +0.29 | +83 | +56 | +105 | +219 |

LOT 107 **GMAR GENERATION L422**
BD: 3/23/23 Reg No: 20673723

DIAMOND GENERATION 41D2
GB GENERATION K04F
GB RACHEL C04C

BUBS SOUTHERN CHARM AA31
GMAR SOUTHERN CHARM H293
GMAR CALL OF DUTY D626

V A R GENERATION 2100
DIAMOND JANNET 701B
S A V WIND CHILL 3442
GB RACHEL F04X
SILVEIRAS CONVERSION 8064
HICKORY HILL ERICA 009
PVA CALL OF DUTY 4159
GMAR RIGHT ANSWER A456

| Act. BW | CED | BW | WW | YW | SC | Doc | Claw | Angle | |
|---------|------|------|-----|-------|-------|-----|-------|-------|------|
| 70 | +9 | -0.3 | +61 | +106 | +1.54 | +21 | +0.63 | +0.49 | |
| PAP | HP | Milk | CW | Marb | REA | \$M | \$W | \$B | \$C |
| +2.30 | +9.1 | +27 | +43 | +0.39 | +0.70 | +67 | +67 | +125 | +229 |

LOT 108 **GMAR RAINMAKER L898**
BD: 3/29/23 Reg No: 20675442

BASIN RAINMAKER 4404
GB RAINMAKER R64H
GB LOTTIE G64F

V A R POWER PLAY 7018
PIERCE POWER PLAY J750
PIERCE FINAL ANSWER Z420

BASIN RAINMAKER 2704
BASIN JOY 1036
DIAMOND GENERATION 41D2
GB LOTTIE S65D
BASIN PAYWEIGHT 1682
SANDPOINT BLACKBIRD 8809
S A V FINAL ANSWER 0035
CCAR LUCY R069

| Act. BW | CED | BW | WW | YW | SC | Doc | Claw | Angle | |
|---------|-------|------|-----|-------|-------|-----|-------|-------|------|
| 72 | +7 | +2.2 | +71 | +130 | +0.36 | +24 | +0.45 | +0.45 | |
| PAP | HP | Milk | CW | Marb | REA | \$M | \$W | \$B | \$C |
| +2.70 | +12.8 | +26 | +56 | +0.62 | +0.38 | +66 | +63 | +136 | +242 |

LOT 109 **GMAR RAINMAKER L413**
BD: 3/16/23 Reg No: 20673716

BASIN RAINMAKER 4404
GB RAINMAKER R64H
GB LOTTIE G64F

LD CAPITALIST 316
GMAR CAPITALIST J251
GMAR COWBOY GIRL UP E384

BASIN RAINMAKER 2704
BASIN JOY 1036
DIAMOND GENERATION 41D2
GB LOTTIE S65D
CONNELLY CAPITALIST 028
LD DIXIE ERICA 2053
HA COWBOY UP 5405
GMAR UPWARD Y318

| Act. BW | CED | BW | WW | YW | SC | Doc | Claw | Angle | |
|---------|-------|------|-----|-------|-------|-----|-------|-------|------|
| 81 | +3 | +3.2 | +70 | +128 | +0.77 | +31 | +0.45 | +0.44 | |
| PAP | HP | Milk | CW | Marb | REA | \$M | \$W | \$B | \$C |
| +2.87 | +11.0 | +35 | +59 | +0.32 | +0.98 | +70 | +68 | +149 | +263 |



LOT 110 **GMAR FULL POWER L890**
BD: 3/26/23 Reg No: 20675434

PA FULL POWER 1208
JAR FULL POWER F850
JAR ESTHER Z116-89G

EXAR SIGNIFICANT 1769B
GMAR SIGNIFICANT B285
GMAR FINAL PRODUCT Z313

PA POWER TOOL 9108
PINE VIEW SQR RITA W091
WK BOBCAT
JAR ESTHER 894-89G
CONNEALY CONSENSUS 7229
SITZ HENRIETTA PRIDE 643T
CONNEALY FINAL PRODUCT
GMAR ALLIANCE W167

| Act. BW | CED | BW | WW | YW | SC | Doc | Claw | Angle | |
|---------|------|------|-----|-------|-------|-----|-------|-------|------|
| 72 | +9 | -0.8 | +46 | +91 | +1.52 | +10 | +0.62 | +0.45 | |
| PAP | HP | Milk | CW | Marb | REA | \$M | \$W | \$B | \$C |
| +1.02 | +9.8 | +27 | +27 | +0.53 | +0.81 | +56 | +50 | +125 | +218 |

LOT 111 **GMAR FULL POWER L894**
BD: 3/27/23 Reg No: 20675438

PA FULL POWER 1208
JAR FULL POWER F850
JAR ESTHER Z116-89G

CONNEALY FINAL PRODUCT
GMAR FINAL PRODUCT A148
GMAR GAME DAY Y003

PA POWER TOOL 9108
PINE VIEW SQR RITA W091
WK BOBCAT
JAR ESTHER 894-89G
CONNEALY PRODUCT 568
EBONISTA OF CONANGA 471
GDAR GAME DAY 449
C C A PRIMROSE 672

| Act. BW | CED | BW | WW | YW | SC | Doc | Claw | Angle | |
|---------|------|------|-----|-------|-------|-----|-------|-------|------|
| 80 | +4 | +1.4 | +40 | +74 | +1.13 | +7 | +0.58 | +0.55 | |
| PAP | HP | Milk | CW | Marb | REA | \$M | \$W | \$B | \$C |
| +0.10 | +9.6 | +29 | +32 | +0.23 | +0.62 | +59 | +47 | +113 | +206 |

LOT 112 **GMAR PRESIDENT L429**
BD: 3/26/23 Reg No: 20673729

S A V PRESIDENT 6847
GMAR PRESIDENT 9310
CAV LADY IDENTITY 202-4202

CONNEALY COMRADE 1385
GMAR COMRADE D364
GMAR UPWARD A211

COLEMAN CHARLO 0256
S A V BLACKCAP MAY 4136
KROUPALS B&B IDENTITY
R B LADY 02-202
CONNEALY CONSENSUS 7229
HAPPY GEE OF CONANGA 919
SITZ UPWARD 307R
V A R CHLOE 9376

| Act. BW | CED | BW | WW | YW | SC | Doc | Claw | Angle | |
|---------|-------|------|-----|-------|-------|-----|-------|-------|------|
| 77 | +13 | -0.6 | +45 | +88 | +1.19 | +22 | +0.44 | +0.51 | |
| PAP | HP | Milk | CW | Marb | REA | \$M | \$W | \$B | \$C |
| +1.05 | +14.0 | +39 | +17 | +0.70 | +0.04 | +85 | +63 | +99 | +213 |

PA Power Tool 9108



PATERNAL GREAT GRANDSIRE TO LOTS 110-111

LOT 113 **RCR DISCOVERYS KATRINA K24**
BD: 12/18/22 Reg No: 20611768

BURNS DISCOVERY 7453
RCR HEATHERS DISCOVERY H2
MAR HEATHER 0468

VERMILION HIGH REGARD E541
WC KATRINA 9321
VERMILION KATRINA 9322

V A R DISCOVERY 2240
BURNS BLACKCAP 4253
V A R DISCOVERY 2240
MAR HEATHER 0463
BTR HIGH REGARD 552
VERMILION LASS 2129
CONNEALY DANNY 5398
VERMILION KATRINA 5125

| Act. BW | CED | BW | WW | YW | SC | Doc | Claw | Angle | |
|---------|-------|------|-----|-------|-------|-----|-------|-------|------|
| 80 | +2 | +1.5 | +58 | +107 | +1.59 | +20 | +0.44 | +0.46 | |
| PAP | HP | Milk | CW | Marb | REA | \$M | \$W | \$B | \$C |
| +1.25 | +11.8 | +29 | +30 | +1.01 | +0.26 | +63 | +59 | +136 | +239 |

LOT 114 **RCR TEN KING AIR K48**
BD: 12/26/22 Reg No: 20613236

LD CAPITALIST 316
CONNEALY KING AIR
PASHA OF CONANGA 557P

JCN RITO 151 JC02
J&T MISS TEN BLACK 1951
J C N TEN BLACKBIRD JN79

CONNEALY CAPITALIST 028
LD DIXIE ERICA 2053
PLATTEMERE WEIGH UP K360
PASTAH OF CONANGA 030L
ER RITO 1243 08P6
ENVIUS BLACKBIRD OF ER N596
A A R TEN X 7008 S A
HOLMAN BLACKBIRD 987

| Act. BW | CED | BW | WW | YW | SC | Doc | Claw | Angle | |
|---------|------|------|-----|-------|-------|-----|-------|-------|------|
| 70 | +11 | +0.0 | +56 | +100 | +1.34 | +3 | +0.46 | +0.38 | |
| PAP | HP | Milk | CW | Marb | REA | \$M | \$W | \$B | \$C |
| +2.72 | +8.9 | +28 | +35 | +0.52 | +0.40 | +68 | +63 | +131 | +238 |

MEATING THE GRADE ANNUAL BULL SALE



LOT 115

GMAR THRIVE L404

BD: 3/12/23

Reg No: 20673708

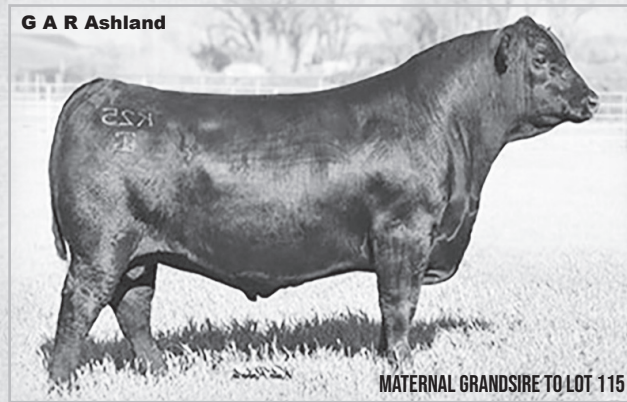
S THRIVE JAS 5515
M R A THRIVE 1048
 M R A CLOVA PRIDE 8152

G A R ASHLAND
GMAR ASHLAND J103
 GMAR RESOURCE G937

TEHAMA REVERE
 S SELENA 201
 S A V RESOURCE 1441
 MRA CLOVA PRIDE 5159
 G A R EARLY BIRD
 CHAIR ROCK AMBUSH 1018
 DD RESOURCE 611
 GMAR 112 W005

| Act. BW | CED | BW | WW | YW | SC | Doc | Claw | Angle | |
|---------|-------|------|-----|-------|-------|-----|-------|-------|------|
| 89 | +1 | +4.5 | +80 | +149 | +1.89 | +23 | +0.52 | +0.45 | |
| PAP | HP | Milk | CW | Marb | REA | \$M | \$W | \$B | \$C |
| +3.55 | +15.2 | +20 | +61 | +0.38 | +0.77 | +56 | +56 | +147 | +247 |

G A R Ashland



MATERNAL GRANDSIRE TO LOT 115

LOT 116

GMAR THRIVE L368

BD: 3/6/23

Reg No: 20673681

S THRIVE JAS 5515
M R A THRIVE 1048
 M R A CLOVA PRIDE 8152

CROUCH OPPORTUNITY 7357
GMAR OPPORTUNITY 031H
 GMAR CONFIDENCE C456

TEHAMA REVERE
 S SELENA 201
 S A V RESOURCE 1441
 MRA CLOVA PRIDE 5159
 FREYS OPPORTUNITY 148A
 BAF LADY IDENTITY 02:357
 CONNEALY CONFIDENCE 0100
 GMAR EXTRA W004

| Act. BW | CED | BW | WW | YW | SC | Doc | Claw | Angle | |
|---------|-------|------|-----|-------|-------|-----|-------|-------|------|
| 80 | +6 | +2.4 | +72 | +131 | +1.47 | +26 | +0.36 | +0.50 | |
| PAP | HP | Milk | CW | Marb | REA | \$M | \$W | \$B | \$C |
| +0.58 | +11.9 | +18 | +51 | +1.05 | +0.50 | +58 | +55 | +155 | +259 |

LOT 117

GMAR TIGER L943

BD: 4/28/23

Reg No: 20707894

GS TIGER 333
MAR TIGER 7504
 MIZPAH BLACKBIRD 9169

BS MAGA D94
GMAR MAGA G293
 GMAR IN FOCUS A623

WK TIGER 1336
 GS FRICTION 037
 H T DANNY BOY 615
 MIZPAH BLACKBIRD 6093-C06
 SYDGEN FATE 2800
 BS GAMMER 453
 MYTTY IN FOCUS
 GMAR IMAGE MAKER U036

| Act. BW | CED | BW | WW | YW | SC | Doc | Claw | Angle | |
|---------|-------|------|-----|-------|-------|-----|-------|-------|------|
| 75 | +4 | +2.4 | +83 | +146 | +2.14 | +25 | +0.60 | +0.48 | |
| PAP | HP | Milk | CW | Marb | REA | \$M | \$W | \$B | \$C |
| +2.18 | +10.1 | +30 | +82 | +0.49 | +0.82 | +44 | +72 | +167 | +261 |

LOT 118

GMAR TIGER L952

BD: 5/2/23

Reg No: 20707902

GS TIGER 333
MAR TIGER 7504
 MIZPAH BLACKBIRD 9169

CONNEALY SPUR
GMAR SPUR G365
 GMAR SUBJECTIVE Z620

WK TIGER 1336
 GS FRICTION 037
 H T DANNY BOY 615
 MIZPAH BLACKBIRD 6093-C06
 CONNEALY STIMULUS 8419
 JAZZA OF CONANGA 8594
 BOYD SUBJECTIVE 7015
 GMAR FORCE 2215

| Act. BW | CED | BW | WW | YW | SC | Doc | Claw | Angle | |
|---------|------|------|-----|-------|-------|-----|-------|-------|------|
| 83 | +2 | +3.4 | +58 | +109 | +0.7 | +9 | +0.47 | +0.43 | |
| PAP | HP | Milk | CW | Marb | REA | \$M | \$W | \$B | \$C |
| +2.67 | +9.5 | +34 | +57 | +0.82 | +0.83 | +46 | +54 | +163 | +257 |

LOT 119

GMAR TIGER L930

BD: 4/17/23

Reg No: 20707884

GS TIGER 333
MAR TIGER 7504
 MIZPAH BLACKBIRD 9169

POSS ACHIEVEMENT
GMAR ACHIEVEMENT H659
 GMAR TRACTION F820

WK TIGER 1336
 GS FRICTION 037
 H T DANNY BOY 615
 MIZPAH BLACKBIRD 6093-C06
 POSS LASTING IMPACT 3118
 POSS ERICA 327
 JMB TRACTION 292
 GMAR IMAGE MAKER X14

| Act. BW | CED | BW | WW | YW | SC | Doc | Claw | Angle | |
|---------|-------|------|-----|-------|-------|-----|-------|-------|------|
| 50 | +12 | -1.3 | +67 | +129 | +1.98 | +29 | +0.52 | +0.59 | |
| PAP | HP | Milk | CW | Marb | REA | \$M | \$W | \$B | \$C |
| +1.60 | +11.3 | +26 | +66 | +0.58 | +0.81 | +45 | +61 | +165 | +259 |

LOT 120

GMAR FORTUNE L341

BD: 3/1/23

Reg No: 20667942

CONNEALY FORTUNE 752L
OSTRAND GRAND ISLAND 491
 S A QUEEN IDELETTE 28

CONNEALY SPUR
GMAR SPUR H213
 MAPLECREST FOREVER LADY 9179

MGR TREASURE
 QUICK FAIR OF CONANGA 831
 CONNEALY ARSENAL 2174
 S A QUEEN IDELETTE 306
 CONNEALY STIMULUS 8419
 JAZZA OF CONANGA 8594
 C R A BEXTOR 872 5205 608
 MAPLECREST FOREVER LADY A618

| Act. BW | CED | BW | WW | YW | SC | Doc | Claw | Angle | |
|---------|-------|------|-----|-------|-------|-----|-------|-------|------|
| 89 | +7 | +3.6 | +83 | +151 | +1.28 | +28 | +0.36 | +0.34 | |
| PAP | HP | Milk | CW | Marb | REA | \$M | \$W | \$B | \$C |
| +3.65 | +11.1 | +25 | +62 | +0.54 | +0.80 | +68 | +66 | +152 | +265 |

LOT 121

GMAR FORTUNE L340

BD: 3/1/23

Reg No: 20667941

CONNEALY FORTUNE 752L
OSTRAND GRAND ISLAND 491
 S A QUEEN IDELETTE 28

G A R ASHLAND
GMAR ASHLAND H393
 GMAR CAPITALIST B130

MGR TREASURE
 QUICK FAIR OF CONANGA 831
 CONNEALY ARSENAL 2174
 S A QUEEN IDELETTE 306
 G A R EARLY BIRD
 CHAIR ROCK AMBUSH 1018
 CONNEALY CAPITALIST 028
 C C A COUNTESS 061

| Act. BW | CED | BW | WW | YW | SC | Doc | Claw | Angle | |
|---------|------|------|-----|-------|-------|-----|-------|-------|------|
| 75 | +8 | +1.0 | +73 | +137 | +0.68 | +20 | +0.33 | +0.45 | |
| PAP | HP | Milk | CW | Marb | REA | \$M | \$W | \$B | \$C |
| -0.53 | +7.2 | +28 | +51 | +1.10 | +0.66 | +58 | +69 | +162 | +268 |



MEATING THE GRADE ANNUAL BULL SALE



FRONTIER LIVE SALE

This Sale will be broadcast live on www.frontierlivesale.com. To view a sale,
1. Create an account, if you have already done so skip to next step. To create a new account, click on the word **Registration** in the upper right hand corner. You must fill out the information requested. Then click **Create Account**. An email will be sent to your email account you provided. Please click the link in the email to activate your new account.



- 2. Once you click the link, your account will now be activated
- 3. At this point, you may click **Continue To Browse Our Site**. This will allow you to view all upcoming auctions.
- 4. Once you see the auction you are interested in, click **Get Approved To Bid** for absentee and live bidding.
- 5. Please enter your information in the form. Depending on the auctioneer, different information may be requested. Click **I agree to sale terms and conditions**. Congratulations! You are now approved for the auction. Now that you're approved you can participate in the auction and bid on its items.
- 6. Login on sale day with the credentials provided at registration.

Call 866-313-0123 for tech help.

Leaving a Legacy...



Travis & Leigh Ann



Jeremy & Melana
Ryder, Teagen, Beckam & Saylor



Justin & Maggie
Pierce family
GMAR Flatwillow Ranch



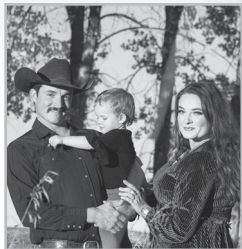
Shane & Dylann
O'Leary
GMAR Ryegate Ranch



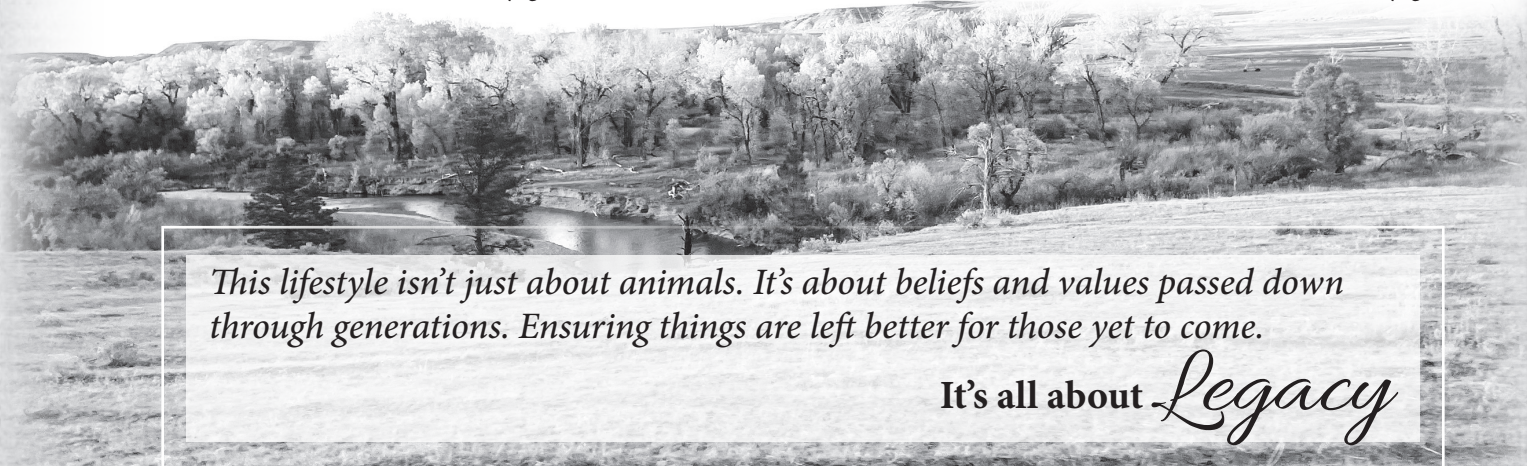
Reed & Kayla
Christensen family
GMAR South Dakota Ranch



Colton & Alyshia
Mury family
GMAR Musselshell Ranch



James & Willow
Sprague family
GMAR Ryegate Ranch



This lifestyle isn't just about animals. It's about beliefs and values passed down through generations. Ensuring things are left better for those yet to come.

It's all about *Legacy*



Tim & Kris Todd
35 Green Mountain Drive
Ryegate, MT 59074

FIRST CLASS
U.S. POSTAGE
PAID
LEWISTOWN, MT
PERMIT NO. 181

First Class Mail
Time Dated Material

ANNUAL SPRING
BULL SALE
FRI, MARCH 8, 2024
NEW LOCATION

PAYS, BILLINGS, MT
Lunch at 11 AM • Sale at 1 PM

Address Service Requested



SALE BROADCASTED ON:



MEATING THE GRADE
SPRING BULL SALE

**OVER HALF THE BULLS
WILL WORK ON HEIFERS!**